



22262 Cuttler Road • New Caney, TX 77357 • *ph* 281-354-3699 • *fx* 281-354-4475
www.PathwayControl.com

8900 Series Two Way, Over-Balanced Valve

Application:

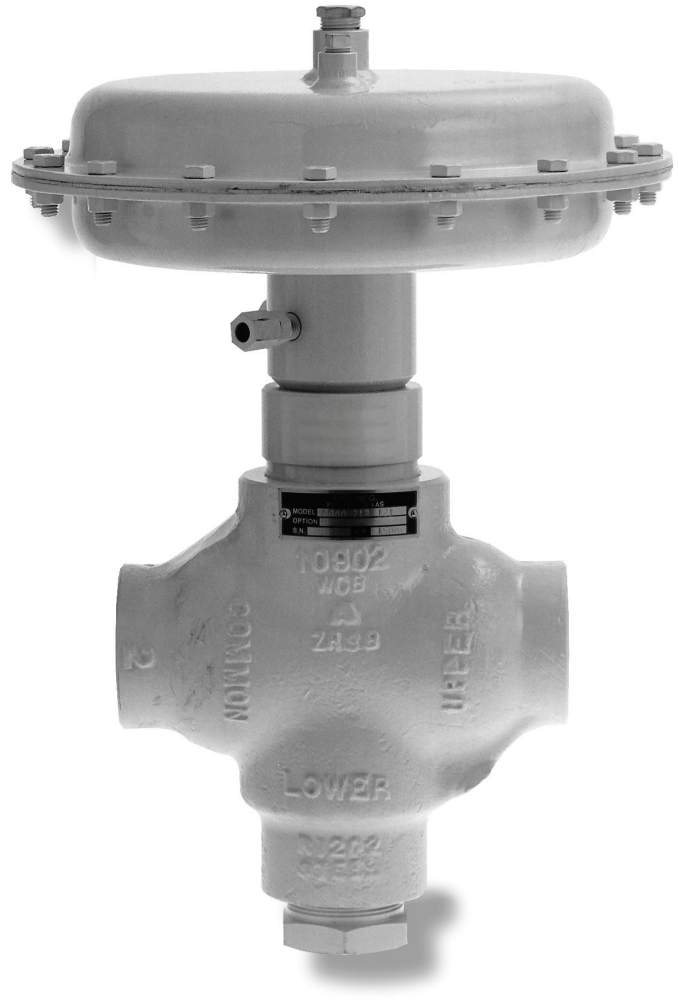
This valve is used when bubble tight shut off is required on high differential pressures. The 8900 Series replaces high pressure, double ported valves and provides positive closure. Commonly used for shutting in of oil or gas wells. Two inch available in 316L stainless steel body.

Operation:

Upstream pressure is applied to the plug and the piston. The piston has a larger effective area than the plug so line pressure keeps the valve closed. When supply pressure is applied on top of the diaphragm, the valve opens. Removing supply pressure allows the line pressure to move the piston up. This process closes the valve. Supply pressure can be controlled using a solenoid valve, pressure pilot or other signal devices.

Features:

- Fails closed at high pressure without depending on an internal spring provides added safety.
- All internal parts can be removed without taking the valve body from the line.
- Stainless steel stem, piston housing and seat provides longer field life.
- Available in 316L stainless steel body to CF8M specifications.
- Soft trim provides bubble tight shut off.



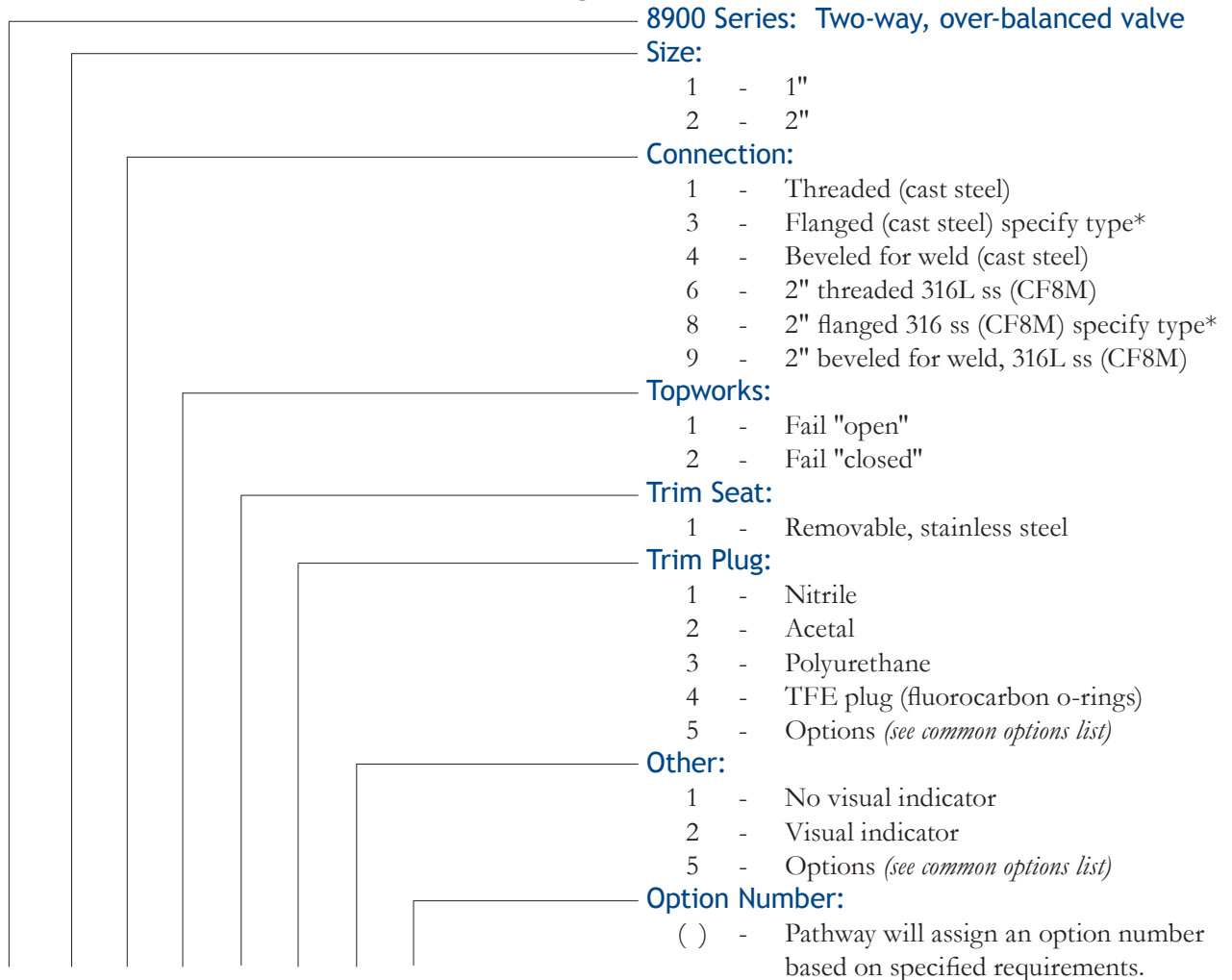
8900 Series

Two-Way, Over-Balanced Valve

Specifications:

Size:	1" Tee Body	2" Tee Body
Working Pressure:	1500 psig	1500 psig
Temperature:	-20°F to +180°F; available to +240°F	
Topworks:	Pressed steel with nylon reinforced nitrile diaphragm. 50 psig maximum supply pressure.	
Effective Area:	45 sq. in.	62 sq. in.
C_v Factor :	18	48
Trim:		
Seat:	Stainless steel, removable.	
Plug:	Steel with molded nitrile standard; optional fabricated acetal, polyurethane or TFE inserts.	
Material:		
Body:	Cast steel standard, available in 316L stainless steel (2" size)	
Stem:	Stainless steel	
Packing:	Poly Pak	
Packing Block:	Stainless steel	

Ordering Chart:

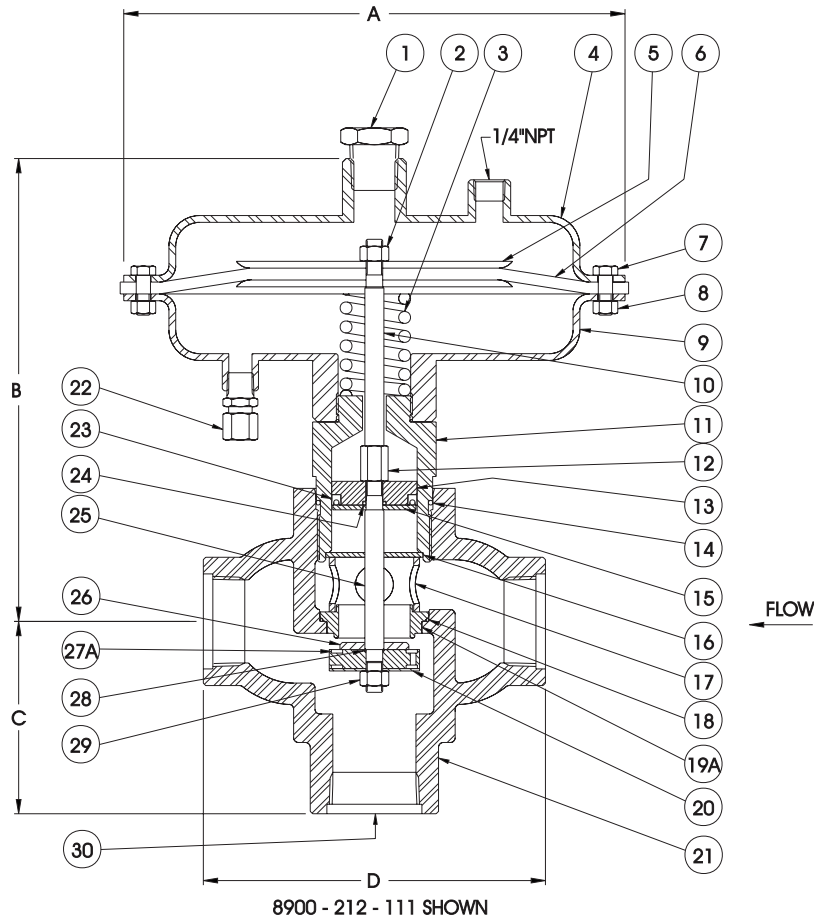


8900- [] ()

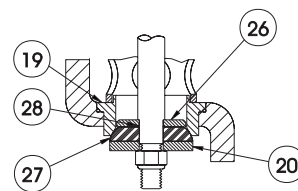
Example: 8900-211-212

**flanged models available in 150# to 1,500# RF or RTJ.*

8900 Series
Two-Way, Over-Balanced Valve



8900 - 212 - 111 SHOWN



RADIUS PLUG

Flanged Models

Flange	Face to Face	W.P. @ 100°F
1" 150# RF or RTJ	6 3/4"	275 psig
2" 150# RF or RTJ	9 5/8"	275 psig
1" 300# RF or RTJ	6 3/4"	720 psig
2" 300# RF or RTJ	10 1/4"	720 psig
1" 600# RF or RTJ	6 3/4"	1440 psig
2" 600# RF or RTJ	10 3/8"	1440 psig
1" 900# RF or RTJ	7 1/4"	1500 psig
2" 900# RF or RTJ	12"	1500 psig
1" 1500# RF or RTJ	7 1/4"	1500 psig
2" 1500# RF or RTJ	12"	1500 psig

Dimensions

Size	1"	2"
A	10 1/2"	13 1/16"
B	11 7/8"	12 1/2"
C	3 1/8"	5 1/16"
D	6 1/4"	9"

Special Face to Face available on flanged and beveled connections.

8900 Series
Two-Way, Over-Balanced Valve

Model Item	1" Part #	2" Part #	Description	Material	Qty
1	10346	10346	Pipe Plug	Plated	1
2	10172	10172	Lock Nut	Plated	1
3	10074	10043	Spring	Carbon Steel	1
4	30049	30101	Upper Diaphragm Housing	Fabricated Carbon Steel	1
5	20696	20696	Diaphragm Plate	Cold Rolled Steel Plate	2
6	10094	10028	Diaphragm	Nitrile	1
7	10207		Cap Screw	Plated	12
		10207	Cap Screw	Plated	16
8	10175		Hex Nut	Plated	12
		10175	Hex Nut	Plated	16
9	30056	30052	Lower Diaphragm Housing	Fabricated Carbon Steel	1
10	20717	20328	Upper Stem	303 ss	1
11	30059	30091	Piston Housing	303 ss	1
12	20716	20716	Stem Connector	303 ss	1
13	20715	20336	Piston	Brass	1
14	10149	10140	O-Ring	Nitrile	1
15	20714	20337	Piston Retainer	Brass	1
16	20713	10367	Travel Stop	Carbon Steel	1
17	20712	20666	Cage	Carbon Steel	1
18	10134	10132	O-Ring	Nitrile	1
19	20514	20331	Seat, Radius Plug	303 ss	1
19A	20699	20330	Seat, Molded Nitrile Plug	303 ss	1
20	20719	20325	Back Up Plate	303 ss	1
20A	20711	20327	Back-Up Plate, Molded Nitrile Plug	Carbon Steel	1
21	See Chart Below		Body	Cast Steel	1
22	23338	23338	Vent Assembly	Plated	1
23	10160	10161	Packing	Molythane	1
24	10121	10121	O-Ring	Nitrile	1
25	20319	20332	Lower Stem	303 ss	1
26	20471	20338	Plug Retainer	303 ss	1
27	21599	20329	Plug	Polyurethane, Radius Plug	1
	20718	21150	Plug	Acetal, Radius Plug	1
		23747	Plug	Glass filled TFE, Radius Plug	1
27A	20710	20326	Plug	Molded Nitrile	1
28	10111	10111	O-Ring	Nitrile	1
29	10181	10181	Lock Nut	18-8 ss	1
30	10224	10225	Pipe Plug (not shown)	Carbon Steel	1
	10016	10016	Name Plate (not shown)	18-8 ss	1
	10324	10324	Drive Screw (not shown)	18-8 ss	2

Body Chart

1" Part #	2" Part #	Description	1" Part #	2" Part #	Description
30120	40068	NPT Threaded	40129	40145	Flanged, 600# RTJ
30121	40065	Beveled for weld	40126	40142	Flanged, 1500# RF
40464	43715	Flanged, 150# RF	40129	40148	Flanged, 1500# RTJ
40120	40136	Flanged, 300# RF	<i>Other flange options available, contact Pathway.</i>		
40123	40139	Flanged, 600# RF			