



22262 Cuttler Road • New Caney, TX 77357 • *ph* 281-354-3699 • *fx* 281-354-4475  
[www.PathwayControl.com](http://www.PathwayControl.com)

## E200 Series Electric Level Control Switch

### Application – High & Low Liquid Level Control; WP 1500 psig to 5000 psig

- Float-actuated Electric Switch for Level Control
- Provides Electric Switch input for control systems, alarms and other switch operations
- Use on production separators, heaters/treaters, scrubbers, liquid accumulators & process vessels
- 316 Stainless Steel construction for use with most Liquids or Liquid interfaces
- Low Specific Gravity of .4 and above
- Direct mounting inside vessel or External Float Cage



### Features and Benefits of the Pathway E200

- 316 SS wetted components for Durability and Corrosion Resistance
- Explosion Proof Certification by CSA to USA and Canada Standards
- Single Seal Application Approved
- Hermetically Sealed Reed Switch Cartridge to protect Integrity of Switch Contacts
- SPST and SPDT Switch Cartridges in Standard and Light Load Ratings
- No Internal Seal used thus eliminating the possibility of process fluid leakage
- Few Moving Parts for Reduced Maintenance and long term Performance
- Excellent Serviceability including Quick Replacement of Electric Switch Cartridge
- Displacer options for various Pressure, Specific Gravity and Interface applications
- Normally Open or Closed operation by simply inverting Level Control unit
- Relay Assembly in Explosion Proof enclosure for DPDT and Higher Amperage service

### Specifications

<b>Working Pressure:</b>	1500 psig; available up to 5000 psig; 1500 psig with manual override
<b>Temperature:</b>	-40° F to +392° F
<b>Specific Gravity:</b>	0.4 minimum; interface 0.1 differential minimum
<b>Switch Ratings:</b>	<u>SPST and SPDT</u> 250V – 0.40A resistive, 120V – 0.83A resistive, 24V – 3.0A resistive; 3.0A maximum in-rush capability; 4 watts minimum for proper switching <u>SPST and SPDT Light Load</u> 150V – 0.17A resistive, 110V – 0.23A resistive, 24V – 1.0A resistive; 1.0A maximum in-rush capability; 0.1 watts minimum for switching
<b>Materials:</b>	316 Stainless Steel Wetted components; Hermetically sealed reed switch
<b>Process Connection:</b>	1½" NPT standard, 2" NPT, ring bolt on E200C, 3" flanged or larger
<b>Electrical Connection:</b>	½" NPT conduit
<b>Certification:</b>	CSA: Class I, Div. 1, Groups A, B, C, D; Class II, Div. 1, Groups E, F, G; Class III, Div. 1 to USA & Canada Standards; ( <i>rating with relay enclosure Class I, Div. 1&amp;2, Groups C,D; Class II, Div. 1, Groups E,F,G; Class II, Div. 2, Groups F,G; Class III</i> ) CSA: Single Seal applications per ANSI/ISA 12.27.01-2003

### E200 Common Options

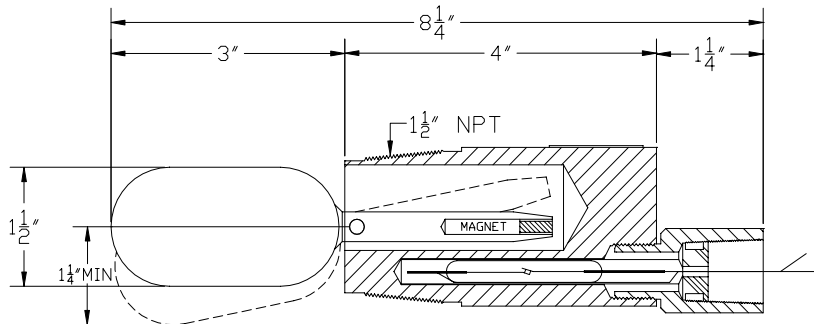
- Manual Override for Field Testing
- 316 SS and 304 SS flange
- Extended body with Vertical displacer
- Monel float
- SPST extended leads
- Float arm extensions
- Relay for DPDT and Higher Amperage
- Annulus plug for use with sediments

### Benefits of ALL Pathway Control Products

- Personalized Service and Support expertise; Responsive, On-time Delivery
- Time-tested & proven design providing Dependable, Long-term Service

## E200 Series Electric Level Control Switch

### Dimensions:



### Ordering Chart:

E200 Series: Electric Level Control Switch

E200C:

Ring Bolted External Cage; WP 1500 psig to 3000 psig (body style 0)

Body Style:

- |  |   |
|--|---|
| <ul style="list-style-type: none"> <li>0</li> <li>1</li> <li>2</li> <li>3</li> <li>4</li> <li>6</li> <li>7</li> <li>8</li> </ul> | <ul style="list-style-type: none"> <li>1 1/2" NPT standard body; Ring Bolted on E200C (no manual override on ring bolt) →</li> <li>2" NPT</li> <li>1 1/2" NPT, manual override*</li> <li>Extended body, 2" NPT, vertical displacer (type 3 or 9)</li> <li>2" NPT, manual override*</li> <li>Extended body, 2" NPT, manual override*, vertical displacer (type 3 or 9)</li> <li>Extended body, 2" NPT, horizontal displacer (type 3 or 9)</li> <li>Extended body, 2" NPT manual override*, horizontal displacer (type 3 or 9)</li> </ul> |
|--|---|
- \*WP 1500 psig on manual override

Displacer Type:

- |   |  |
|---|--|
| <ul style="list-style-type: none"> <li>1</li> <li>2</li> <li>3</li> <li>4</li> <li>9</li> </ul> | <ul style="list-style-type: none"> <li>316 SS standard float, WP 1500 psig, 0.4 SG min (body style 0, 1, 2, 4) →</li> <li>Polypropylene high pressure displacer, WP 5000 psig standard, 3000 psig on E200C, +180° F max temp; 0.6 SG min (body style 0, 1, 2, 4)</li> <li>Interface Polypropylene displacer, WP 5000 psig standard, 3000 psig on E200C, +180° F max temp; upper fluid &lt; .870 SG, lower fluid &gt; .970 SG</li> <li>Customer defined SG for upper and lower fluid interface</li> <li>Polypropylene high pressure displacer, WP up to 5000 psig, +180° F max temp, 0.5 SG min (extended body style 3, 6, 7, 8)</li> </ul> |
|---|--|

Switch selection:

- |  |  |
|--|--|
| <ul style="list-style-type: none"> <li>0</li> <li>1</li> <li>2</li> <li>3</li> </ul> | <ul style="list-style-type: none"> <li>SPST standard load →</li> <li>SPDT standard load</li> <li>SPST light load</li> <li>SPDT light load</li> </ul> |
|--|--|

Other:

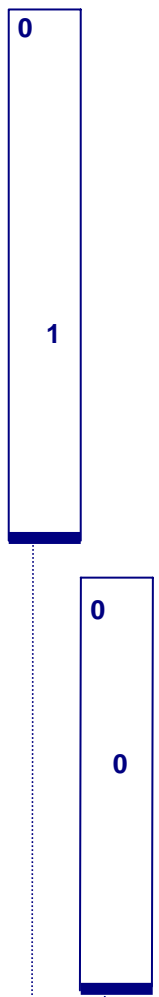
- |  |   |
|--|---|
| <ul style="list-style-type: none"> <li>0</li> <li>2</li> <li>3</li> <li>4</li> <li>7</li> <li>8</li> <li>9</li> <li>5</li> </ul> | <ul style="list-style-type: none"> <li>No other options →</li> <li>Annulus plug</li> <li>Relay assembly general purpose plug-in, 24VDC DPDT 12 Amp</li> <li>Relay assembly general purpose plug-in, 120VAC DPDT 12 Amp</li> <li>Relay assembly general purpose plug-in, 240VAC DPDT 12 Amp</li> <li>Relay assembly hermetically sealed plug-in, 24VDC DPDT 12 Amp</li> <li>Relay assembly hermetically sealed plug-in, 120VAC DPDT 12 Amp</li> <li>Customer Specified Requirements (see E200 common options)</li> </ul> |
|--|---|

Option (#)

Assigned # for Customer Specific requirements

Example as Selected

**Example:**  
**E200**



**E200 - 01 - 00**

## E200 Series – Manual Override Electric Level Control Switch

### Application – High & Low Liquid Level Control; WP up to 1500 psig

- Float-actuated Electric Switch for High & Low Liquid Level Control and Interface Control
- Provides Electric Switch input for control systems, alarms or other switch operations
- Low Specific Gravity of .4 and above
- Interface as low as .1 Specific Gravity differential
- Use on production separators, heaters/treaters, scrubbers, liquid accumulators & process vessels
- Direct mounting inside vessel or threaded External Float Cage



### Features and Benefits of the Pathway E200 with Manual Override

- Manual Override for ease of Field Testing
- 316 SS wetted components for Durability and Corrosion Resistance
- Explosion Proof Certification by CSA to USA and Canada Standards
- Single Seal application Approved
- Hermetically Sealed Switch Cartridge to protect Integrity of Switch Contacts
- SPST and SPDT Switch Cartridges in Standard and Light Load Ratings
- Few Moving Parts for Reduced Maintenance and long term Performance
- Excellent Serviceability including Quick Replacement of Electric Switch Cartridge
- Displacer options for various Pressure, Specific Gravity and Interface applications
- Relay Assemblies in Explosion Proof enclosures for DPDT and Higher Amperage service

### Specifications

<b>Working Pressure:</b>	Pressures up to 1500 psig with manual override
<b>Temperature:</b>	-40° F to +392° F
<b>Specific Gravity:</b>	0.4 minimum; interface 0.1 differential minimum
<b>Switch Rating:</b>	<u>SPST and SPDT</u> 250V – 0.40A resistive, 120V – 0.83A resistive, 24V – 3.0A resistive; 3.0A maximum in-rush capability; 4 watts minimum for proper switching <u>SPST and SPDT Light Load</u> 150V – 0.17A resistive, 110V – 0.23A resistive, 24V – 1.0A resistive; 1.0A maximum in-rush capability; 0.1 watts minimum for switching
<b>Materials:</b>	316 Stainless Steel Wetted components; Hermetically sealed reed switch
<b>Process Connection:</b>	1½" NPT standard, 2" NPT, 3" flanged or larger
<b>Electrical Connection:</b>	½" NPT conduit
<b>Certification:</b>	CSA: Class I, Div. 1, Groups A, B, C, D; Class II, Div. 1, Groups E, F, G; Class III, Div. 1 to USA & Canada Standards; ( <i>rating with relay enclosure Class I, Div. 1&amp;2, Groups C,D; Class II, Div. 1, Groups E,F,G; Class II, Div. 2, Groups F,G; Class III</i> ) CSA: Single seal applications per ANSI/ISA 12.27.01-2003

### E200 Manual Override Common Options

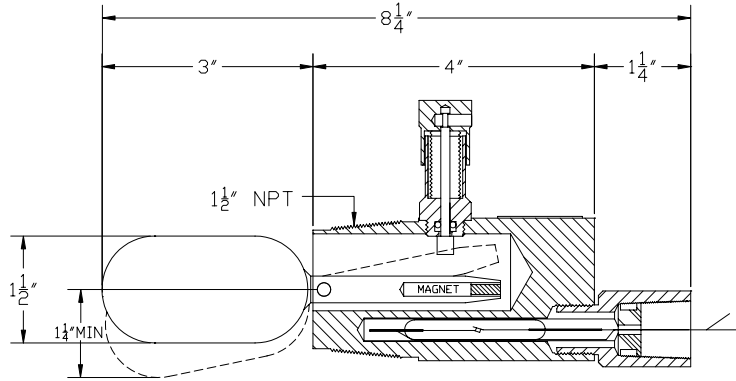
- 316 SS and 304 SS flange
- Extended body with Vertical Displacer
- Monel float
- SPST extended leads
- Float arm extensions
- Annulus plug for use with sediments
- Relay for DPDT and Higher Amperage

### Benefits of ALL Pathway Control Products

- Personalized service and support expertise; Responsive, On-time Delivery
- Time-tested & proven design providing Dependable, Long-term service

## E200 Series – Manual Override Electric Level Control Switch

**Dimensions:**



**Ordering Chart:**

E200 Series: Electric Level Control Switch  
 E200C: Ring Bolted External Cage; WP 1500 psig to 3000 psig (body style 0)

**Body Style:**

- 0 1 1/2" standard body; Ring bolted on E200C (no manual override on ring bolt)
  - 1 2" NPT
  - 2 1 1/2" NPT, manual override\*
  - 3 Extended body, 2" NPT, vertical displacer (type 3 or 9)
  - 4 2" NPT, manual override\*
  - 6 Extended body, 2" NPT, manual override\*, vertical displacer (type 3 or 9)
  - 7 Extended body, 2" NPT, horizontal displacer (type 3 or 9)
  - 8 Extended body, 2" NPT manual override\*, horizontal displacer (type 3 or 9)
- \*WP 1500 psig on manual override

**Displacer Type:**

- 1 316 SS standard float, WP 1500 psig, 0.4 SG min (body style 0, 1, 2, 4)
- 2 Polypropylene high pressure displacer, WP 5000 psig standard, 3000 psig on E200C, +180° F max temp; 0.6 SG min (body style 0, 1, 2, 4)
- 3 Interface Polypropylene displacer, WP 5000 psig standard, 3000 psig on E200C, +180° F max temp; upper fluid < .870 SG, lower fluid > .970 SG
- 4 Customer defined SG for upper and lower fluid interface
- 9 Polypropylene high pressure displacer, WP up to 5000 psig, +180° F max temp, 0.5 SG min (extended body style 3, 6, 7, 8)

**Switch selection:**

- 0 SPST standard load
- 1 SPDT standard load
- 2 SPST light load
- 3 SPDT light load

**Other:**

- 0 No other options
- 2 Annulus plug
- 3 Relay assembly general purpose plug-in, 24VDC DPDT 12 Amp
- 4 Relay assembly general purpose plug-in, 120VAC DPDT 12 Amp
- 7 Relay assembly general purpose plug-in, 240VAC DPDT 12 Amp
- 8 Relay assembly hermetically sealed plug-in, 24VDC DPDT 12 Amp
- 9 Relay assembly hermetically sealed plug-in, 120VAC DPDT 12 Amp
- 5 Customer Specified Requirements (see E200 common options)

**Option (#)**

Assigned # for Customer Specific requirements

**Example as Selected**

**Example:  
 E200-**

4  
  
1

1  
  
0

**E200 - 41 - 10**

## E200 Series – Extended Body Electric Level Control Switch

### Application – High & Low Liquid Level Control; WP 1500 psig to 5000 psig

- Float-actuated Electric Switch for Level Control
- Provides Electric Switch input for control systems, alarms and other switch operations
- Use on production separators, heaters/treaters, scrubbers, liquid accumulators & process vessels
- 316 Stainless Steel construction for use with most Liquids or Liquid interfaces
- Low Specific Gravity of .5 and above
- Horizontal and Vertical Displacer options
- Extended Body provides increased reach inside vessel



### Features and Benefits of the Pathway E200

- 316 SS wetted components for Durability and Corrosion Resistance
- Explosion Proof Certification by CSA to USA and Canada Standards
- Single Seal Application Approved
- Hermetically Sealed Reed Switch Cartridge to protect Integrity of Switch Contacts
- SPST and SPDT Switch Cartridges in Standard and Light Load Ratings
- No Internal Seal used thus eliminating the possibility of process fluid leakage
- Few Moving Parts for Reduced Maintenance and long term Performance
- Excellent Serviceability including Quick Replacement of Electric Switch Cartridge
- Displacer options for various Pressure, Specific Gravity and Interface applications
- Normally Open or Closed operation by simply inverting Level Control unit
- Relay Assembly in Explosion Proof enclosure for DPDT and Higher Amperage service

### Specifications

<b>Working Pressure:</b>	1500 psig; available up to 5000 psig; 1500 psig with manual override
<b>Temperature:</b>	-40° F to +392° F
<b>Specific Gravity:</b>	0.4 minimum; interface 0.1 differential minimum
<b>Switch Ratings:</b>	<u>SPST and SPDT</u> 250V – 0.40A resistive, 120V – 0.83A resistive, 24V – 3.0A resistive; 3.0A maximum in-rush capability; 4 watts minimum for proper switching <u>SPST and SPDT Light Load</u> 150V – 0.17A resistive, 110V – 0.23A resistive, 24V – 1.0A resistive; 1.0A maximum in-rush capability; 0.1 watts minimum for switching
<b>Materials:</b>	316 Stainless Steel Wetted components; Hermetically sealed reed switch
<b>Process Connection:</b>	1½” NPT standard, 2” NPT, ring bolt on E200C, 3” flanged or larger
<b>Electrical Connection:</b>	½” NPT conduit
<b>Certification:</b>	CSA: Class I, Div. 1, Groups A, B, C, D; Class II, Div. 1, Groups E, F, G; Class III, Div. 1 to USA & Canada Standards; <i>(rating with relay enclosure Class I, Div. 1&amp;2, Groups C,D; Class II, Div. 1, Groups E,F,G; Class II, Div. 2, Groups F,G; Class III )</i> CSA: Single Seal applications per ANSI/ISA 12.27.01-2003

### E200 Extended Body Common Options

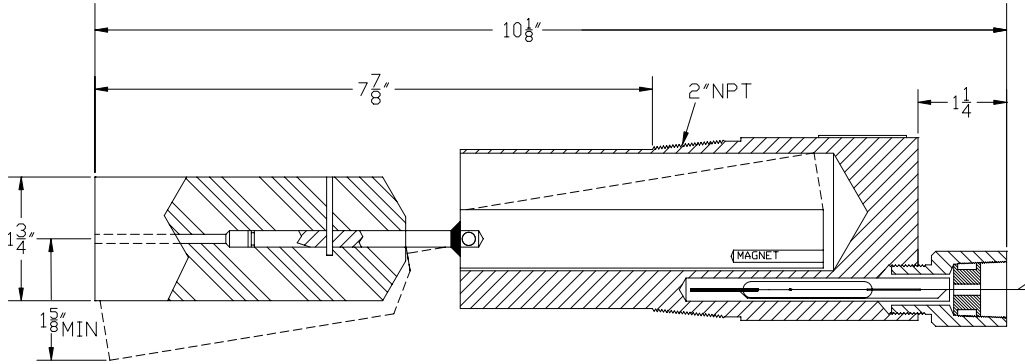
- Manual Override for Field Testing
- 316 SS and 304 SS flange
- SPST extended leads
- Float arm extensions
- Relay for DPDT and Higher Amperage
- Annulus plug for use with sediments

### Benefits of ALL Pathway Control Products

- Personalized Service and Support expertise; Responsive, On-time Delivery
- Time-tested & proven design providing Dependable, Long-term Service

## E200 Series – Extended Body Electric Level Control Switch

**Dimensions:**



**Ordering Chart:**

E200 Series: Electric Level Control Switch

E200C:

Ring Bolted External Cage; WP 1500 psig to 3000 psig (body style 0)

Body Style:

- 0 1½" NPT standard body; Ring Bolted on E200C (no manual override on ring bolt)
  - 1 2" NPT
  - 2 1½" NPT, manual override\*
  - 3 Extended body, 2" NPT, vertical displacer (type 3 or 9)
  - 4 2" NPT, manual override\*
  - 6 Extended body, 2" NPT, manual override\*, vertical displacer (type 3 or 9)
  - 7 Extended body, 2" NPT, horizontal displacer (type 3 or 9)
  - 8 Extended body, 2" NPT manual override\*, horizontal displacer (type 3 or 9)
- \*WP 1500 psig on manual override

Displacer Type:

- 1 316 SS standard float, WP 1500 psig, 0.4 SG min (body style 0, 1, 2, 4)
- 2 Polypropylene high pressure displacer, WP 5000 psig standard, 3000 psig on E200C, +180° F max temp; 0.6 SG min (body style 0, 1, 2, 4)
- 3 Interface Polypropylene displacer, WP 5000 psig standard, 3000 psig on E200C, +180° F max temp; upper fluid < .870 SG, lower fluid > .970 SG
- 4 Customer defined SG for upper and lower fluid interface
- 9 Polypropylene high pressure displacer, WP up to 5000 psig, +180° F max temp, 0.5 SG min (extended body style 3, 6, 7, 8)

Switch selection:

- 0 SPST standard load
- 1 SPDT standard load
- 2 SPST light load
- 3 SPDT light load

Other:

- 0 No other options
- 2 Annulus plug
- 3 Relay assembly general purpose plug-in, 24VDC DPDT 12 Amp
- 4 Relay assembly general purpose plug-in, 120VAC DPDT 12 Amp
- 7 Relay assembly general purpose plug-in, 240VAC DPDT 12 Amp
- 8 Relay assembly hermetically sealed plug-in, 24VDC DPDT 12 Amp
- 9 Relay assembly hermetically sealed plug-in, 120VAC DPDT 12 Amp
- 5 Customer Specified Requirements (see E200 common options)

Option (#)

Assigned # for Customer Specific requirements

**Example:**  
E200

7  
  
  
  
  
  
  
  
  
  
**9**

1  
  
  
  
  
  
  
  
  
  
**0**

**Example as Selected**

**E200 - 79 - 10**

## EV200 Series Electric Vertical Level Control Switch

### Application – High & Low Liquid Level Control; WP 250 psig

- Float-actuated Electric Vertical Switch for High & Low Liquid Level Control
- Provides Electric Switch input for control systems, alarms or other switch operations
- Low Specific Gravity of .7 and above
- Use on production separators, heaters/treaters, scrubbers, liquid accumulators & process vessels

### Features and Benefits of the Pathway EV200

- 316 SS wetted components for Durability and Corrosion Resistance
- Explosion Proof Certification by CSA to USA and Canada Standards
- Single Seal Application Approved
- Hermetically Sealed Switch Cartridge to protect Integrity of Switch Contacts
- SPST and SPDT Switch Cartridges in Standard and Light Load Ratings
- No Internal Seal thus eliminating the possibility of process fluid leakage
- Normally Open or Normally Closed Operation
- Float options and Float Arm extensions to meet most applications
- Few Moving Parts for Reduced Maintenance and long term Performance
- Excellent Serviceability including Quick Replacement of Electric Switch Cartridge
- Relay Assemblies in Explosion Proof enclosures for DPDT and Higher Amperage service



### Specifications

<p><b>Working Pressure:</b> 250 psig  <b>Temperature:</b> -40° F to +392° F  <b>Specific Gravity:</b> 0.7 minimum  <b>Switch Rating:</b></p>	<p><u>SPST and SPDT</u> 250V – 0.40A resistive, 120V – 0.83A resistive, 24V – 3.0A resistive; 3.0A maximum in-rush capability; 4 watts minimum for proper switching  <u>SPST and SPDT Light Load</u> 150V – 0.17A resistive, 110V – 0.23A resistive, 24V – 1.0A resistive; 1.0A maximum in-rush capability; 0.1 watts minimum for switching</p>
<p><b>Materials:</b>  <b>Process Connection:</b> 1½” NPT standard, 2” NPT, 2” flanged or larger  <b>Electrical Connection:</b> ½” NPT conduit  <b>Certification:</b></p>	<p>316 Stainless Steel Wetted components; Hermetically sealed reed switch          CSA: Class I, Div. 1, Groups A, B, C, D; Class II, Div. 1, Groups E, F, G; Class III, Div. 1 to USA &amp; Canada Standards; (<i>rating with relay enclosure Class I, Div. 1&amp;2, Groups C,D; Class II, Div. 1, Groups E,F,G; Class II, Div. 2, Groups F,G; Class III</i>)          CSA: Single seal applications per ANSI/ISA 12.27.01-2003</p>

### EV200 Common Options

- 316 SS and 304 SS flange
- Variety of float extensions and floats
- Float arm turbulence protective guide
- SPST extended leads
- Relay for DPDT and Higher Amperage

### Benefits of ALL Pathway Control Products

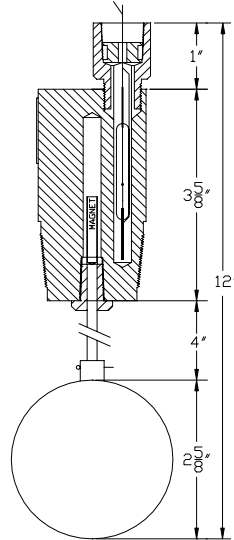
- Personalized service and support expertise; Responsive, On-time Delivery
- Time-tested & proven design providing Dependable, Long-term service



## EV200 Series

### Electric Vertical Level Control Switch

**Dimensions:**



**Ordering Chart:**

EV200 Series: Electric Vertical Level Control Switch; WP 250 psig

**Body Style:**

- 0 1½" NPT, standard body, normally open
- 1 2" NPT, normally open
- 2 1½" NPT, normally closed
- 3 2" NPT, normally closed

**Displacer Type:**

- 1 3" O.D. 316 SS standard float with 4" float arm
- 2 3" O.D. 316 SS float, extended arm 4+" to 12" (specify length)
- 3 3½" x 6", 316 SS float, extended arm 12" to 36" (specify length)
- 4 5½" O.D. 316 SS float, extended arm 36" to 72" (specify length)
- 5 5½" O.D. 316 SS float, extended arm 72" to 96" (specify length)
- 6 Optional float sizes and float arm extensions (Customer to specify)

**Switch selection:**

- 0 SPST Standard load
- 1 SPDT Standard load
- 2 SPST Light load
- 3 SPDT Light load

**Other:**

- 0 No other options selected
- 1 Float arm turbulence protective guide
- 3 Relay assembly general purpose plug-in, 24VDC DPDT 12 Amp
- 4 Relay assembly general purpose plug-in, 120VAC DPDT 12 Amp
- 7 Relay assembly general purpose plug-in, 240VAC DPDT 12 Amp
- 8 Relay assembly hermetically sealed plug-in, 24VDC DPDT 12 Amp
- 9 Relay assembly hermetically sealed plug-in, 120VAC DPDT 12 Amp
- 5 Customer Specified Requirements (see EV200 common options)

Option (#) Assigned # for Customer Specific requirements

**Example:**

**EV200-**

0  
  
1

0  
  
1

**EV200 - 01 - 01**

**Example as Selected**

## E200NF Series Electric Flow Indicator

### Application – Flow Indicator; WP up to 5000 psig

- Paddle operated Electric Indicator of liquid or gas flow or no flow in piping systems
- Provides Electric Switch input for control systems, alarms or other operations
- Liquid Flow indicated at 1.0 ft./sec and greater; No flow indicated at less than .75 ft./sec
- Direct mounting inside vessel or pipe

### Features and Benefits of the Pathway E200NF

- 316 SS wetted components for Durability and Corrosion Resistance
- Explosion Proof Certification by CSA to USA and Canada Standards
- Single Seal Application Approved
- Wide variety of Paddle lengths to meet most applications
- No Internal Seal used thus eliminating the possibility of process fluid leakage
- Hermetically Sealed Switch Cartridge to protect Integrity of Switch Contacts
- SPST and SPDT Switch Cartridges in Standard and Light Load Ratings
- Few Moving Parts for Reduced Maintenance and long term Performance
- Excellent Serviceability and quick replacement of Electric Switch Cartridge
- Simply Rotate the device to change flow sensing direction
- Relay Assembly in Explosion Proof enclosures for DPDT and Higher Amperage service



### Specifications

Working Pressure:	5000 psig; 1500 psig with manual override
Temperature:	-40° F to +392° F
Switch Rating:	<u>SPST and SPDT</u> 250V – 0.40A resistive, 120V – 0.83A resistive, 24V – 3.0A resistive; 3.0A maximum in-rush capability; 4 watts minimum for proper switching <u>SPST and SPDT Light Load</u> 150V – 0.17A resistive, 110V – 0.23A resistive, 24V – 1.0A resistive; 1.0A maximum in-rush capability; 0.1 watts minimum for switching
Materials:	316 Stainless Steel Wetted components; Hermetically sealed reed switch
Process Connections:	1½" NPT standard, 2" NPT, 2" flanged or larger
Electrical Connections:	½" NPT conduit
Certification:	CSA: Class I, Div. 1, Groups A, B, C, D; Class II, Div. 1, Groups E, F, G; Class III, Div. 1 to USA & Canada Standards; ( <i>rating with relay enclosure Class I, Div. 1&amp;2, Groups C,D; Class II, Div. 1, Groups E,F,G; Class II, Div. 2, Groups F,G; Class III</i> ) CSA: Single seal applications per ANSI/ISA 12.27.01-2003

### E200NF Common Options

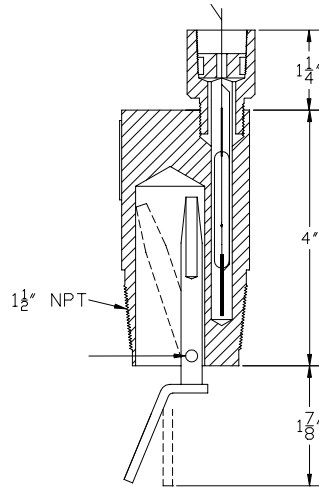
- 316 SS and 304 SS flange
- Variety of paddle lengths
- SPST extended leads
- Manual Override for Field Testing
- Relay for DPDT and Higher Amperage
- Annulus plug for use with sediments

### Benefits of ALL Pathway Control Products

- Personalized service and support expertise; Responsive, On-time Delivery
- Time-tested & proven design providing Dependable, Long-term service

## E200NF Series Electric Flow Indicator

**Dimensions:**



**Ordering Chart:**

E200NF Series: Electric Flow Indicator; WP 5000 psig standard

**Example:**

**E200NF-**

**Body Style:**

- 0 1 1/2" NPT standard body
- 1 2" NPT

**Paddle Type:**

- 1 1 1/2" standard paddle length
- 2 2" paddle length
- 3 3" paddle length
- 4 4" paddle length
- 6 6" paddle length
- 8 8" paddle length
- 0 10" paddle length
- 5 Customer Specified paddle length

**Switch selection:**

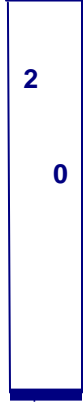
- 0 SPST Standard load
- 1 SPDT Standard load
- 2 SPST Light load
- 3 SPDT Light load

**Other:**

- 0 No other options
- 2 Annulus plug
- 3 Relay assembly general purpose plug-in, 24 VDC DPDT 12 Amp
- 4 Relay assembly general purpose plug-in, 120 VAC DPDT 12 Amp
- 7 Relay assembly general purpose plug-in, 240 VAC DPDT 12 Amp
- 8 Relay assembly hermetically sealed plug-in, 24 VDC DPDT 12 Amp
- 9 Relay assembly hermetically sealed plug-in 120 VAC DPDT 12 Amp
- 5 Customer Specified Requirements (see E200NF common options)

**Option (#)**

Assigned # for Customer Specific requirements



**E200NF - 01 - 20**

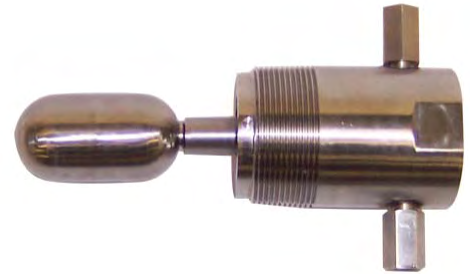
**Example as Selected**

## P120 Series

### Snap Acting Non-Bleed Pneumatic Level Control

**Application – High & Low Liquid Level Control; WP 1500 psig to 5000 psig**

- Float-actuated Pneumatic Switch for High or Low Level control or to operate Control Valves
- Use on production separators, heaters/treaters, scrubbers, liquid accumulators & process vessels
- Stainless Steel construction for use with most Liquids or Liquid interfaces
- Low Specific Gravity of .5 and above
- Snap Acting Non-Bleed from 0 to full supply
- Direct mounting inside vessel or External Float Cage



#### Features and Benefits of the Pathway P120

- Durable, Dependable 316 SS wetted components for Corrosion Resistance
- No Internal Seal used thus eliminating the possibility of process fluid leakage
- Few Moving Parts for Reduced Maintenance and long term Performance
- Excellent Serviceability and Ease of Repair with Quick-change replacement parts
- Economical small-float installation
- Displacer options for various Pressure, Specific Gravity and Interface applications
- Direct-acting or Indirect-acting simply by altering the supply and exhaust connections

#### Specifications

Output:	Snap Acting, Non-Bleed from 0 to Full Supply
Working Pressure:	1500 psig; available up to 5000 psig; 1500 psig with manual override
Supply Pressure:	30 psig standard; 60 psig and 100 psig available
Temperature:	-40° F to +450° F
Specific Gravity:	0.5 minimum; 0.4 minimum with counterweight; interface 0.1 differential
Materials:	316 Stainless Steel Wetted components; optional materials available
Process Connection:	2" NPT standard, 1½" NPT, Ring Bolt on P120C, 3" flanged or larger
Supply/Output Connection:	¼" NPT

#### P120 Common Options

- Manual Override for Field Testing
- 1½" NPT process connection
- 316 SS and 304 SS flanged
- Float Arm Extensions of 2", 4", 6" on standard body style
- Counterweight for Lower S.G.
- Extended body with horizontal or vertical displacer
- Stainless Steel Vent assembly
- Annulus Plug for use with sediments

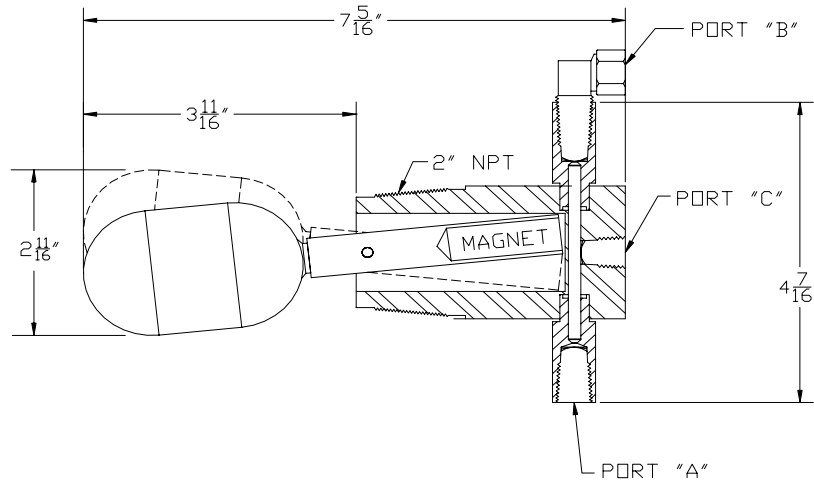
#### Benefits of ALL Pathway Control Products

- Personalized service and support expertise; Responsive, On-time Delivery
- Time-tested & Proven design providing Dependable, Long-term service

## P120 Series

### Snap Acting Non-Bleed Pneumatic Level Control

**Dimensions:**



**Ordering Chart:**

**P120 Series: Pneumatic Level Control**

**P120C:** Ring Bolted External Cage, WP 1500 psig to 3000 psig (body style 0)

**Body Style:**

- 0 Ring bolted body on P120C (no manual override; no extended body)
  - 1 2" NPT standard body
  - 2 2" NPT, manual override\*
  - 3 Extended body, 2" NPT, vertical displacer (type 3 or 9)
  - 6 Extended body, 2" NPT, manual override\*, vertical displacer (type 3 or 9)
  - 7 Extended body, 2" NPT, horizontal displacer (type 3 or 9)
  - 8 Extended body, 2" NPT, manual override\*, horizontal displacer (type 3 or 9)
- \*WP 1500 psig on manual override

**Displacer Type:**

- 1 316 SS standard float, WP 1500 psig; 0.5 SG min (body style 0, 1, 2)
- 2 Polypropylene high pressure displacer, WP 5000 psig standard, 3000 psig on P120C; +180° F max temp; 0.6 SG min. (body style 0, 1, 2)
- 3 Interface Polypropylene displacer, WP 5000 psig standard, 3000 psig on P120C; +180° F max temp; upper fluid < .870 SG, lower fluid > .970 SG
- 4 Customer defined SG for upper and lower fluid interface
- 9 Polypropylene high pressure displacer, WP up to 5000 psig; +180° F max temp; 0.5 SG min (extended body style 3, 6, 7, 8)

**Supply Pressure:**

- 1 30 psig (flow rate 40 scfh at 30 psig)
- 2 60 psig (flow rate 25 scfh at 30 psig)
- 3 100 psig (flow rate 15 scfh at 30 psig)

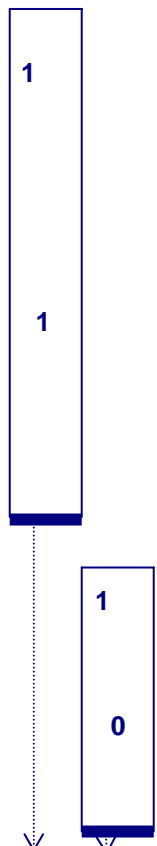
**Other:**

- 0 No other options
- 2: Annulus plug
- 5: Customer Specified Requirements (see P120 common options)

**Option (#):** Assigned # for Customer Specific requirements

**Example:**

**P120-**



**Example as Selected**

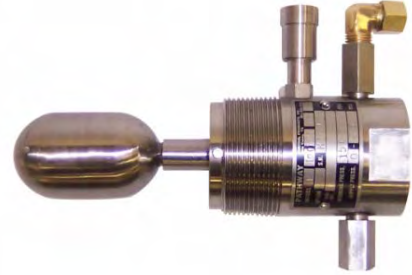
**P120 - 11 - 10**

## P120 Series – Manual Override

### Snap Acting Non-Bleed Pneumatic Level Control

#### Application – High & Low Liquid Level Control; WP up to 1500 psig

- Float-actuated Pneumatic Switch for High or Low Level control or to operate Control Valves
- Manual Override provides easy In-service Testing
- Use on production separators, heaters/treaters, scrubbers, liquid accumulators & process vessels
- Stainless Steel construction for use with most Liquids or Liquid interfaces
- Low Specific Gravity of .5 and above
- Snap Acting Non-Bleed from 0 to full supply
- Direct mounting inside vessel or threaded External Float Cage



#### Features and Benefits of the Pathway P120 with Manual Override

- Manual Override for ease of Field Testing
- Durable, Dependable 316 SS wetted components for Corrosion Resistance
- Few Moving Parts for Reduced Maintenance and long term Performance
- Excellent Serviceability and Ease of Repair with Quick-change replacement parts
- Economical small-float installation
- Displacer options for various Pressure, Specific Gravity and Interface applications
- Direct-acting or Indirect-acting simply by altering the supply and exhaust connections

#### Specifications

Output:	Snap Acting, Non-Bleed from 0 to Full Supply
Working Pressure:	Pressures up to 1500 psig with Manual Override
Supply Pressure:	30 psig standard; 60 psig and 100 psig available
Temperature:	-40° F to +450° F
Specific Gravity:	0.5 minimum; 0.4 minimum with counterweight; interface 0.1 differential
Materials:	316 Stainless Steel Wetted components; optional materials available
Process Connection:	2" NPT standard, 3" flanged or larger (1½" NPT not available)
Supply/Output Connection:	¼" NPT

#### P120 Manual Override Common Options

- 304 SS and 316 SS flange
- Counterweight for lower S.G.
- Annulus Plug for use with sediments
- Stainless Steel Vent assembly
- Float Arm Extensions of 2", 4", 6" on standard body style
- Extended body with Horizontal or Vertical displacer

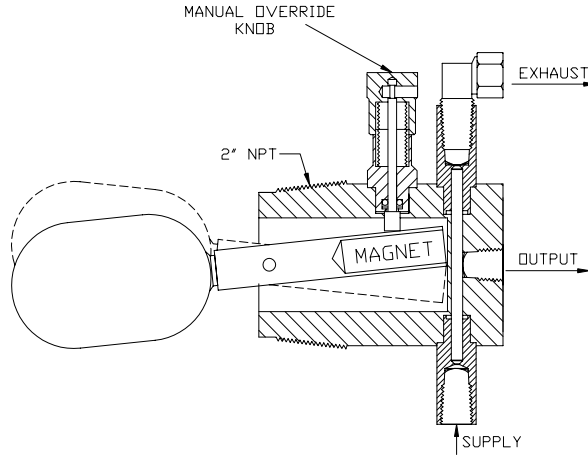
#### Benefits of ALL Pathway Control Products

- Personalized service and support expertise; Responsive, On-time Delivery
- Time-tested & proven design providing Dependable, Long-term service

## P120 Series – Manual Override

### Snap Acting Non-Bleed Pneumatic Level Control

**Dimensions:**



**Ordering Chart:**

<b>P120 Series: Pneumatic Level Control</b>		→
<b>P120C:</b>	Ring Bolted External Cage, WP 1500 psig to 3000 psig (body style 0)	
<b>Body Style:</b>		
0	Ring bolted body on P120C (no manual override; no extended body)	
1	2" NPT standard body	
2	2" NPT, manual override*	→
3	Extended body, 2" NPT, vertical displacer (3 or 9)	
6	Extended body, 2" NPT, manual override*, vertical displacer (3 or 9)	
7	Extended body, 2" NPT, horizontal displacer (3 or 9)	
8	Extended body, 2" NPT, manual override*, horizontal displacer (3 or 9)	
	*WP 1500 psig on manual override	
<b>Displacer Type:</b>		
1	316 SS standard float, WP 1500 psig, 0.5 SG min (body style 0, 1, 2) →	
2	Polypropylene high pressure displacer, WP 5000 psig standard, 3000 psig on P120C, +180° F max temp, 0.6 SG min (body style 0, 1, 2)	
3	Interface Polypropylene displacer, WP 5000 psig standard, 3000 psig on P120C, +180° F max temp; upper fluid < .870 SG, lower fluid > .970 SG	
4	Customer defined SG for upper and lower fluid interface	
9	Polypropylene high pressure displacer, WP up to 5000 psig, +180° F max temp, 0.5 SG min (extended body style 3, 6, 7, 8)	
<b>Supply Pressure:</b>		
1	30 psig (flow rate 40 scfh at 30 psig) →	
2	60 psig (flow rate 25 scfh at 30 psig)	
3	100 psig (flow rate 15 scfh at 30 psig)	
<b>Other:</b>		
0	No other options →	
2:	Annulus plug	
5:	Customer Specified Requirements (see P120 common options)	
<b>Option (#):</b>	Assigned # for Customer Specific requirements	

**Example:**

**P120-**

2

1

0

**Example as Selected**

**P120 - 21 - 10**

## P120 Series – Extended Body Snap Acting Non-Bleed Pneumatic Level Control

**Application – High & Low Liquid Level Control; WP 1500 to 5000 psig**

- Float-actuated Pneumatic Switch for High or Low Level control or to operate Control Valves
- Use on production separators, heaters/treaters, scrubbers, liquid accumulators, process vessels
- Stainless Steel construction for use with most Liquids or Liquid interfaces
- Low Specific Gravity of .5 and above
- Snap Acting Non-Bleed from 0 to full supply
- Direct mounting inside vessel or external adaptor
- Extended body provides increased reach inside the vessel
- Horizontal and Vertical Displacer options



### Features and Benefits of the Pathway P120 Extended Body

- Durable, Dependable 316 SS wetted components for Corrosion Resistance
- No Internal Seal used thus eliminating the possibility of process fluid leakage
- Few Moving Parts for Reduced Maintenance and long term Performance
- Economical, Simple installation
- Excellent Serviceability and Ease of Repair with Quick-change replacement parts
- Displacer options for Interface applications
- Direct-acting or Indirect-acting simply by altering the supply and exhaust connections

### Specifications

<b>Output:</b>	Snap Acting, Non-Bleed from 0 to Full Supply
<b>Working Pressure:</b>	Pressures up to 5000 psig; 1500 psig with manual override
<b>Supply Pressure:</b>	30 psig standard; 60 psig and 100 psig available
<b>Temperature:</b>	-40° F to +180° F
<b>Specific Gravity:</b>	0.5 minimum; interface 0.1 differential minimum
<b>Materials:</b>	316 Stainless Steel Wetted components with polypropylene displacer
<b>Process Connection:</b>	2" NPT Standard, 3" flanged or larger, no ring bolt with extended body
<b>Supply/Output Connection:</b>	¼" NPT

### P120 Extended Body Common Options

- Manual Override for Field Testing
- 304 SS and 316 SS flanged
- Float arm extensions from 2 " to 6"
- Annulus Plug for use with sediments

### Benefits of ALL Pathway Control Products

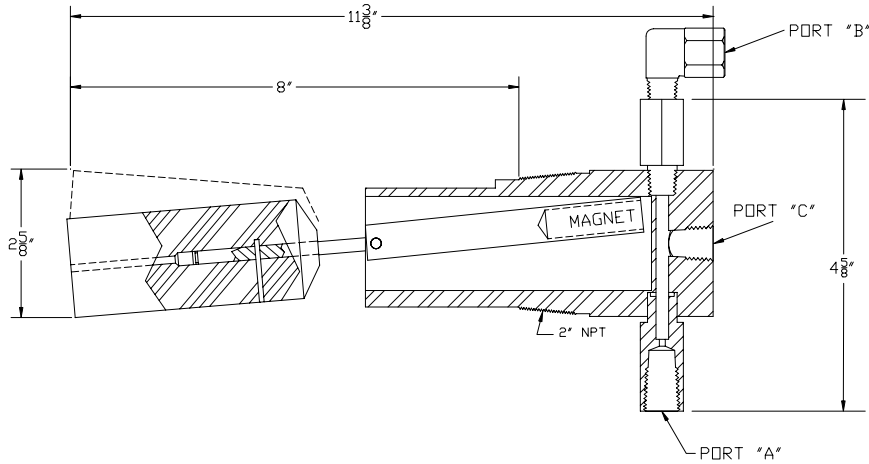
- Personalized service and support expertise; Responsive, On-time Delivery
- Time-tested & Proven design providing Dependable, Long-term service



## P120 Series – Extended Body

### Snap Acting Non-Bleed Pneumatic Level Control

**Dimensions:**



**Ordering Chart:**

**Example:**

P120 Series: Pneumatic Level Control

P120C: Ring Bolted External Cage, WP 1500 psig to 3000 psig (body style 0)

Body Style:

- 0 Ring bolted body (no manual override; no extended body)
  - 1 2" NPT standard body
  - 2 2" NPT, manual override\*
  - 3 Extended body, 2" NPT, vertical displacer (Type 3, 9)
  - 6 Extended body, 2" NPT, manual override\*, vertical displacer (Type 3, 9)
  - 7 Extended body, 2" NPT, horizontal displacer (Type 3, 9)
  - 8 Extended body, 2" NPT, manual override\*, horizontal displacer (Type 3, 9)
- \*WP 1500 psig with manual override

Displacer Type:

- 1 316 SS standard float, 1500 psig, 0.5 SG min (body 0, 1, 2)
- 2 Polypropylene high pressure displacer, WP 5000 psig standard, 3000 psig on P120C, +180° F max temp; SG 0.6 min. (body 0, 1, 2)
- 3 Interface Polypropylene displacer, WP 5000 psig standard, 3000 psig on P120C, +180° F max temp, upper fluid < .870 SG, lower fluid > .970 SG
- 4 Customer defined SG for upper and lower fluid interface
- 9 Polypropylene high pressure displacer, WP up to 5000 psig, +180° F max temp, 0.5 SG min (extended body style 3, 6, 7, 8)

Supply Pressure:

- 1 30 psig (flow rate 40 scfh at 30 psig)
- 2 60 psig (flow rate 25 scfh at 30 psig)
- 3 100 psig (flow rate 15 scfh at 30 psig)

Other:

- 0 No other options
- 2: Annulus plug
- 5: Customer Specified Requirements (see P120 common options)

Option (#): Assigned # for Customer Specific requirements

**P120-**

7

9

1

0

**P120 - 79 - 10**

**Example as Selected**

## P120NF Series Pneumatic Flow Indicator

### Application – Flow Indicator; Working Pressure 5000 psig

- Pneumatic paddle operated device for indication of liquid flow or no flow in piping systems, accumulators and process vessels
- Provides a pneumatic output to operate control systems, alarms or other operations
- Stainless Steel construction for use with most Liquids or Liquid interfaces
- Snap Acting Non-Bleed from 0 to full supply
- Direct mounting inside a vessel or pipe



### Features and Benefits of the Pathway P120NF

- Durable, Dependable 316 SS wetted components for Corrosion Resistance
- No Internal Seal used thus eliminating the possibility of process fluid leakage
- Few Moving Parts for Reduced Maintenance and long term Performance
- Excellent Serviceability and Ease of Repair with Quick-change replacement parts
- Wide variety of Paddle Lengths to meet most applications

### Specifications

Output:	Snap Acting, Non-Bleed from 0 to Full Supply
Working Pressure:	5000 psig; 1500 psig with manual override
Supply Pressure:	30 psig standard; 60 psig and 100 psig available
Temperature:	-40° F to +450° F
Flow Indication:	.75 ft/sec or less indicates no flow; 1.0 ft/sec or more indicates flow
Materials:	316 Stainless Steel Wetted components; optional materials available
Connections:	
Process:	2" NPT standard, 1½" NPT and flanged units available
Supply & Output:	1/4" NPT

### P120NF Common Options

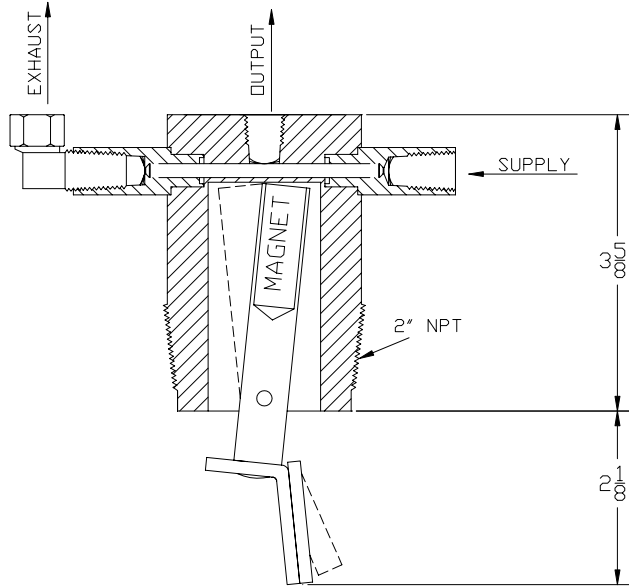
- Variety of Paddle Lengths
- 1½" NPT process connection
- 316 SS and 304 SS flanged
- Annulus Plug for use with sediments

### Benefits of ALL Pathway Control Products

- Personalized service and support expertise; Responsive, On-Time Delivery
- Time-tested & proven design providing Dependable, Long-term service

## P120NF Series Pneumatic Flow Indicator

**Dimensions:**



**Ordering Chart:**

P120NF Series: Pneumatic Flow Indicator; WP 5000 psig standard →

**Example:**

**P120NF-**

**Body Style:**

- 1 2" NPT standard body
- 2 1 1/2" NPT

**Paddle Type:**

- 1 1 1/2" standard paddle length
- 2 2" paddle length
- 3 3" paddle length
- 4 4" paddle length
- 6 6" paddle length
- 8 8" paddle length
- 0 10" paddle length
- 5 Customer specified paddle length

**Supply Pressure:**

- 1 30 psig (flow rate 40 scfh at 30 psig)
- 2 60 psig (flow rate 25 scfh at 30 psig)
- 3 100 psig (flow rate 15 scfh at 30 psig)

**Other:**

- 0 No other options
- 2 Annulus plug
- 5 Customer Specified Requirements (see P120NF common options)

**Option (#)**

Assigned # for Customer Specific requirements



**Example as Selected**

**P120 - 11 - 10**

## PT100 Series Throttling Pneumatic Level Control

**Application – High & Low Liquid Level Control; WP 1500 psig to 5000 psig**

- Float-actuated Throttling Pneumatic Level Control for High or Low Level control or to operate Control Valves
- Use on production separators, heaters/treaters, scrubbers, liquid accumulators & process vessels
- Stainless Steel construction for use with most Liquids or Liquid Interfaces
- Low Specific Gravity of .4 and above
- Throttling output 3 – 15 psig with 20 psig supply
- Direct mounting inside vessel or External Float Cage



### Features and Benefits of the Pathway PT100

- Durable, Dependable 316 SS wetted components for Corrosion Resistance
- No Internal Seal used thus eliminating the possibility of process fluid leakage
- Few Moving Parts for Reduced Maintenance and long term Performance
- Economical small-float installation
- Displacer options for various Pressure, Specific Gravity and Interface applications
- Replaceable Throttling Action Pilot
- Direct-acting or Indirect-acting simply by inverting the level control unit
- Manual Override option for Field Testing

### Specifications

Output:	Throttling from 3 to 15 psig
Working Pressure:	1500 psig; available up to 5000 psig; 1500 psig with manual override
Supply Pressure:	20 psig minimum; 30 psig maximum
Temperature:	-40° F to +450° F
Specific Gravity:	0.4 minimum; interface 0.1 differential
Materials:	316 Stainless Steel wetted components; optional materials available
Process Connection:	2" NPT standard, Ring Bolt on PT100C, 3" flanged or larger
Supply/Output Connection:	1/8" NPT

### PT100 Common Options

- Manual Override for Field Testing
- 316 SS & 304 SS flange connection
- Monel float
- Stainless Steel Vent assembly
- Annulus Plug for use with sediments

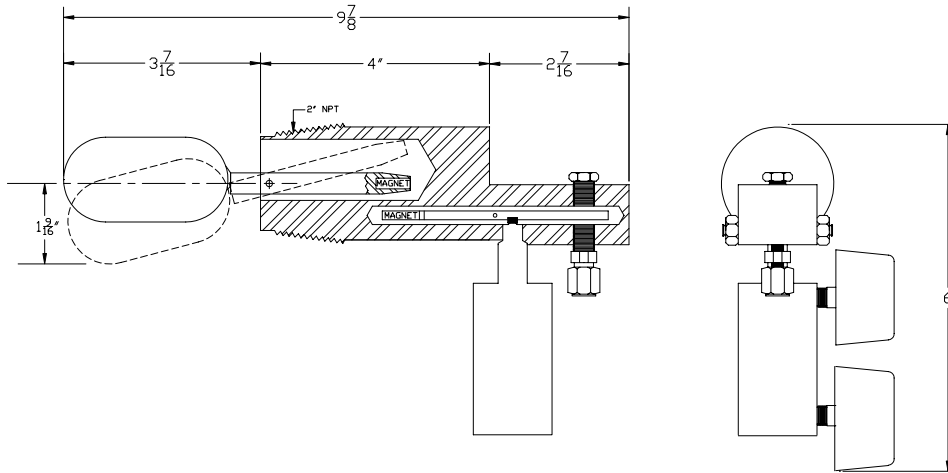
### Benefits of ALL Pathway Control Products

- Personalized service and support expertise; Responsive, On-time Delivery
- Time-tested & Proven design providing Dependable, Long-term service

## PT100 Series

### Throttling Pneumatic Level Control

**Dimensions:**



**Ordering Chart:**

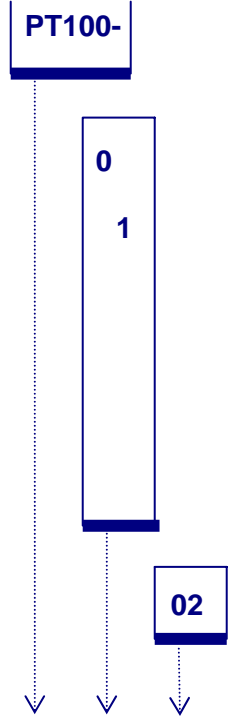
**Example:**

PT 100 Series: Throttling Pneumatic Level Control → **PT100-**  
 PT100C: Ring Bolted External cage; WP 1500 psig to 3000 psig (body style 0)

- Body Style:**  
 0 2" NPT standard body; Ring bolted body on PT100C →
- Type:**  
 1 316 SS standard float, WP 1500 psig, 0.4 SG min →  
 2 Polypropylene high pressure displacer, WP 5000 psig standard, 3000 psig on PT100C; +180° F max temp; 0.6 SG min  
 3 Interface Polypropylene displacer, WP 5000 psig standard, 3000 psig on PT100C; +180° F max temp; upper fluid < .870 SG, lower fluid > .970 SG  
 4 Customer defined SG for upper and lower fluid Interface

- Other:**  
 00 No other options  
 02 Annulus plug →  
 05 Customer Specific Requirements (see PT100 Common Options)

**Option (#):** Assigned # for Customer Specific Requirements



**Example as Selected**

**PT100 - 01 - 02**

## P110 Series Snap Acting Pneumatic Level Control

**Application – High & Low Liquid Level Control; WP 1500 psig to 5000 psig**

- Float-actuated Snap Acting Pneumatic switch for High or Low Level Control or to operate Control Valves
- Use on production separators, heaters/treaters, scrubbers, liquid accumulators & process vessels
- Stainless Steel construction for use with most Liquids or Liquid interfaces
- Low Specific Gravity of .4 and above
- Snap Acting from 0 to full supply
- Direct mounting inside vessel or External Float Cage



### Features and Benefits of the Pathway P110

- Durable, Dependable 316 SS wetted components for Corrosion Resistance
- No Internal Seal used thus eliminating the possibility of process fluid leakage
- Few moving parts for Reduced Maintenance and long term Performance
- Economical small-float installation
- Displacer options for various Pressure, Specific Gravity and Interface applications
- Replaceable Snap Acting Pilot
- Direct-acting or Indirect Acting achieved by simply inverting the level control
- Manual Override option for Field Testing

### Specifications

Output:	Snap Acting from 0 to Full Supply
Working Pressure:	1500 psig; available up to 5000 psig; 1500 psig with manual override
Supply Pressure:	30 psig to 60 psig std; available 15 psig to 40 psig; 50 psig to 100 psig
Temperature:	-40° F to +450° F
Specific Gravity:	0.4 minimum
Materials:	316 Stainless Steel Wetted Components; optional materials available
Process Connection:	2" NPT standard, Ring Bolt on P110C, 3" flanged or larger
Supply/Output Connection	1/8" NPT

### P110 Common Options

- Manual Override for Field Testing
- 316 SS & 304 SS flange connection
- 15 psig to 40 psig or 50 psig to 100 psig supply
- Monel float
- Stainless Steel vent
- Annulus Plug for use with sediments

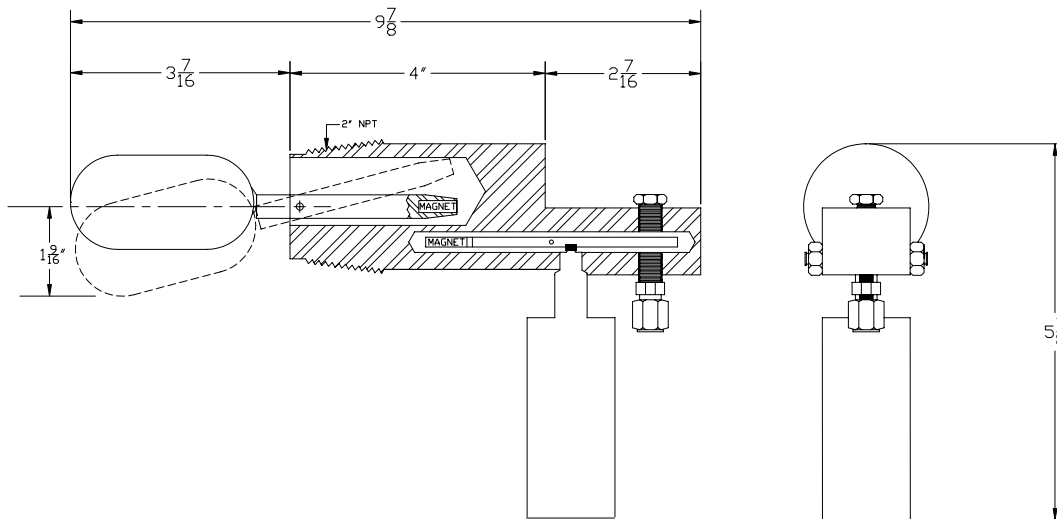
### Benefits of ALL Pathway Control Products

- Personalized service and support expertise; Responsive, On-time Delivery
- Time-tested & proven design providing Dependable, Long-term service

## P110 Series

### Snap Acting Pneumatic Level Control

**Dimensions:**



**Ordering Chart:**

**Example:**

P110 Series: Snap Acting Pneumatic Level Control →  
 P110C: Ring Bolted External Cage; WP 1500 psig to 3000 psig (body style 0)

**P110-**

**Body Style:**

0 → 2" NPT standard body; Ring bolted body on P110C →

**Displacer Type:**

1 → 316 SS standard float, WP 1500 psig, 0.4 SG minimum →

2 → Polypropylene high pressure displacer, WP 5000 psig standard, 3000 psig on P110C, +180° F max temp, 0.6 SG min

3 → Interface Polypropylene displacer, WP 5000 psig standard, 3000 psig max on P110C, +180° F max temp, upper fluid < .870 SG; lower fluid > .970 SG

4 → Customer defined SG for upper and lower fluid interface

**Other:**

00 → No other options →

02: Annulus plug

05: Customer Specific Requirements (see P110 Common Options)

Option (#): Assigned # for Customer Specific Requirements



**Example as Selected**

**P110 - 01 - 00**

## PT101 Extended Body Throttling Pneumatic Level Control

Application – High & Low Liquid Level Control; WP 1500 psi to 2500 psi

- Float-actuated Throttling Pneumatic Level Control for high or low level control or to operate Control Valves
- Use on production separators, heaters/treaters, scrubbers, liquid accumulators & process vessels
- Stainless Steel construction for use with most Liquids or Liquid Interfaces
- Low Specific Gravity of .4 and above
- Throttling output 3 – 15 psi with 20 psi supply
- Extended body provides increased reach inside the vessel
- Direct mounting inside vessel



### Features and Benefits of the Pathway PT101

- Durable, Dependable 316 SS wetted components for corrosion resistance
- No Internal Seal used thus eliminating the possibility of process fluid leakage
- Few Moving parts for Reduced Maintenance and long term Performance
- Displacer options for various Pressure, Specific Gravity and Interface applications
- Economical small-float installation
- Replaceable Throttling Action Pilot
- Direct-acting or Indirect Acting simply by inverting the level control unit

### Specifications

Output:	Throttling from 3 to 15 psi
Working Pressure:	1500 psig; available to 2500 psig
Supply Pressure:	20 psi minimum; 30 psi maximum
Temperature:	-40° F to +450° F
Specific Gravity:	0.4 minimum
Materials:	316 Stainless Steel wetted components; optional materials available
Process Connection:	2" NPT standard, available 3" flanged or larger
Supply/Output Connection:	1/8" NPT

### PT101 Common Options

- 316 SS and 304 SS flanged
- Monel float
- Stainless Steel vent

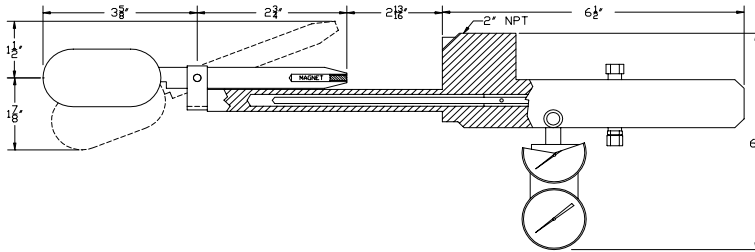
### Benefits of ALL Pathway Control Products

- Personalized service and support expertise; Responsive On-time Delivery
- Time-tested & proven design providing Dependable, Long-term service



## PT101 Extended Body Throttling Pneumatic Level Control

### Dimensions:



### Ordering Chart:

PT101 Series: Pneumatic Level Control

Body Style:

0

2" NPT standard body

Type:

1

316 SS standard float, 1500 psig, 0.4 SG min

2

Polypropylene high pressure displacer, WP 2500 psig standard, +180° F max temp; 0.6 SG min

3

Interface Polypropylene displacer, WP 2500 psig standard +180° F max temp; upper fluid < .870 SG, lower fluid > .970 SG

4

Customer defined SG for upper and lower fluid interface

Other:

00:

No other options

05:

Customer Specified Requirements (see PT101 common options)

Option (#):

Assigned # for Customer Specific requirements

### Example:

**PT101-**

**0**

**1**

**00**

**Example as Selected**

**PT101 - 01 - 00**

## P111 Extended Body Snap Acting Pneumatic Level Control

Application – High & Low Pressure Control; working 1500 psi to 2500 psi

- Float-actuated Snap Acting Pneumatic switch for High or Low Level Control or to operate Control Valves
- Use on production separators, heaters/treaters, scrubbers, liquid accumulators & process vessels
- Stainless Steel construction for use with most Liquids or Liquid interfaces
- Low Specific Gravity of .4 and above
- Snap Acting from 0 to full supply
- Direct mounting inside vessel
- Extended body provides increased reach inside the vessel



### Features and Benefits of the Pathway P111

- Durable, Dependable 316 SS wetted components for corrosion resistance
- No Internal Seal used thus eliminating the possibility of process fluid leakage
- Few Moving parts for Reduced Maintenance and long term Performance
- Economical small-float installation
- Displacer options for various Pressure, Specific Gravity and Interface applications
- Replaceable Snap-acting Pilot
- Direct-acting or Indirect Acting achieved by simply inverting the level control

### Specifications

Output:	Snap Acting from 0 to Full Supply
Working Pressure:	1500 psig; available up to 2500 psig
Supply Pressure:	30 psig to 60 psig; available 15 psig to 40 psig; 50 psig to 100 psig
Temperature:	-40° F to +450° F
Specific Gravity:	0.4 minimum
Materials:	316 Stainless Steel wetted components; optional materials available
Process Connection:	2" NPT standard, available 3" flanged or larger
Supply/Output Connection:	1/8" NPT

### P111 Common Options

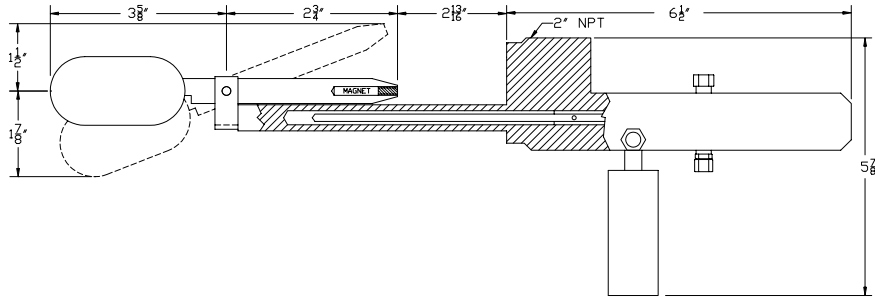
- 316 SS and 304 SS flanged
- 15 psig to 40 psig or 50 psig to 100 psig supply pressure supply
- Monel float
- Stainless Steel vent

### Benefits of ALL Pathway Control Products

- Personalized service and support expertise; Responsive, On-time Delivery
- Time-tested & proven design providing Dependable, Long-term service

# P111 Extended Body Snap Acting Pneumatic Level Control

**Dimensions:**



**Ordering Chart:**

**Example:**

P111: Pneumatic Level Control Switch with Extended Body		→	<b>P111-</b>
Body Style:			<div style="border-bottom: 1px solid black; padding: 5px 0 5px 10px;">0</div> <div style="padding: 5px 0 5px 10px;">1</div>
0	2" NPT standard body	→	
Type:			
1	316 SS standard float, WP 1500 psig, 0.4 SG min	→	
2	Polypropylene high pressure displacer, WP 2500 psig standard; +180° F max temp; 0.6 SG min		
3	Interface Polypropylene high pressure displacer, WP 2500 psig standard; +180° F max temp, upper fluid < .870 SG; lower fluid > .970 SG		
4	Customer defined SG for upper and lower fluid Interface		
Other:			<div style="border-bottom: 1px solid black; padding: 5px 0 5px 10px;">00</div>
00:	No other options	→	
05:	Customer Specified Requirements (see P111 common options)		
Option (#):	Assigned # for Customer Specific requirements		<div style="border-bottom: 1px solid black; padding: 5px 0 5px 10px;">00</div>
<b>Example as Selected</b>			<b>P111 - 01 - 00</b>

## 6100 Series

### Electric Vapor Pressure or Head Pressure Switch

#### Application – Control Vapor Pressure or Liquid Level

- Electric pressure-actuated switch for controlling Vapor Pressure on a vessel or to provide Liquid Level Control
- Provides electric switch input for control systems, alarms or other operations
- Highly sensitive Pressure Switch is adjustable from 0" to 8" of water
- Liquid Static Head Switch is adjustable in a range from 2' to 30' of water
- Use on stock tanks or other vessels operating at atmospheric pressures
- Simple, Direct Mounting 2" NPT vessel connection



#### Features and Benefits of the Pathway 6100

- Rugged Heavy-duty construction for long service life and low maintenance
- Durable Switch Enclosure for electrical components
- Sensitive diaphragm provides accurate control over full range of device
- No floats or moving parts protruding inside the vessel
- Ease of installation with standard 2" NPT connection to the tank or vessel
- Three switches independently adjustable over the full control range
- Field adjustable trip points

#### Specifications

Working Pressure:	Atmospheric
Vapor Pressure Range	Switch range from 0" to 8" of water
Static Head Pressure Range	Head Pressure Switch range from 2' to 30' of water
Temperature:	-20° F to +180° F
Switch Rating:	
Vapor Pressure	SPST, Mercury, 1 amp at 115 V AC, .5 amp at 220 V AC
Static Head Pressure	SPST, Mercury, 6 amp at 115 V AC, 3 amp at 220 V AC
Materials:	Cast iron body; aluminum stem (6100-1), stainless steel stem (6100-2); stainless steel switch rod; nylon reinforced nitrile diaphragm
Process Connections:	2" NPT standard
Electrical Connections:	½" NPT conduit standard

#### 6100 Common Options

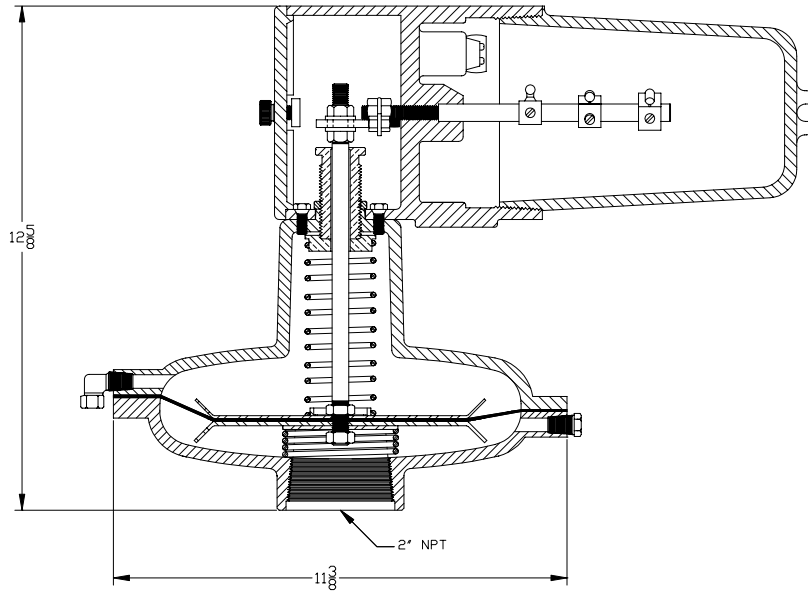
- Up to three additional switches for increased control points
- Light spring for more sensitive response to 15' liquid level

#### Benefits of ALL Pathway Control Products

- Personalized service and support expertise; Responsive, On-time Delivery
- Time-tested & Proven design provides Dependable, Long-term Service

# 6100 Series Electric Vapor Pressure or Head Pressure Switch

**Dimensions:**



**Ordering Chart:**

6100 Series: Electric Vapor Pressure or Head Pressure Switch →

**Example:**

**6100-**

Type:

- 1 Vapor Pressure Switch
- 2 Static Head Pressure Switch

1

Other:

- 01 No other options selected
- 05 Customer Specified Requirements (see 6100 common options)

01

Other Options (#)

Assigned # for Customer Specific requirements



**Example as Selected**

**6100 - 1 - 01**

## C300 Series External Cage for Liquid Level Controls

### Application – External Cage; Working Pressure up to 5000 psig

- Use in applications where level controls are contained outside the vessel
- Use on production separators, heaters/treaters, scrubbers, liquid accumulators & process vessels
- Choice of materials for use with most Liquids or Liquid interfaces
- May be used with most Pathway Liquid Level Control products or other brands with similar application
- Available with a variety of control connections including 1½" NPT, 2" NPT and ring bolted flange
- Process connections of 1" NPT, 1½" NPT, 2" NPT; Socket weld connections of 1", 1½" and 2" on C300CS and C300SS



### Features and Benefits of the Pathway C300 Series

- Heavy Duty, Rugged construction
- Choice of materials –
  - Ductile Iron – model C300
  - Carbon Steel – model C300CS
  - 316 Stainless Steel – model C303SS
- Variety of Control Connections and Process Connections available
- S100 Series Sight Glass may be added for Visual Inspection
- Available with Pathway Electric and Pneumatic Liquid Level Controls or separately

### Specifications

<b>Working Pressure:</b>	5000 psig standard; 3000 psig with ring bolted connection
<b>Temperature:</b>	-40° F to +450° F
<b>Materials:</b>	A395 Ductile iron; A352-LCC steel; 316L (CF3M) stainless steel
<b>Level Control Connection:</b>	1½" NPT, 2" NPT, or Ring Bolted connection
<b>Process Connection:</b>	1" NPT standard, available in 1½" and 2" NPT; socket weld connections of 1", 1 ½" and 2" on C300CS and C300SS

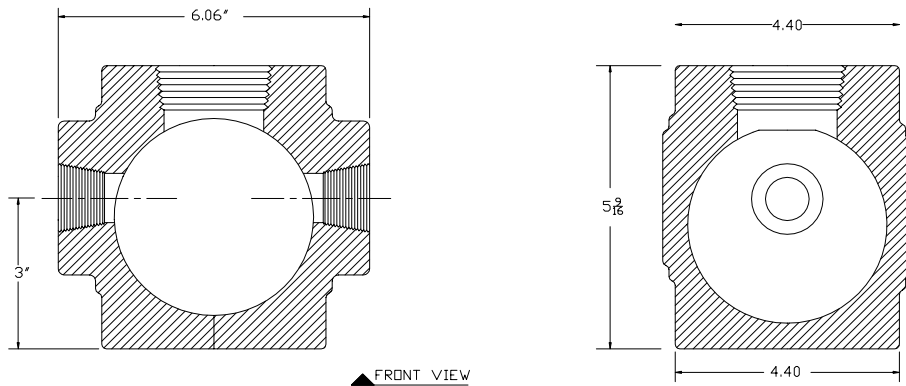
### Benefits of ALL Pathway Control Products

- Personalized service and support expertise; Responsive, On-time Delivery
- Time-tested & Proven design providing Dependable, Long-term service

## C300 Series

### External Cage for Liquid Level Controls

**Dimensions:**



**Ordering Chart:**

C300: External Cage for Level Controls – Ductile Iron  
 C300CS: – Carbon Steel  
 C300SS: – Stainless Steel

**Example:**

**C300-**

**Level Control Connections:**

- 1 1½" NPT
- 2 2" NPT
- 3 Ring bolted, 3000 psig max

**Process Connections:**

- 1 1" NPT standard
- 2 1½" NPT
- 3 2" NPT
- 6 Socket Weld connections (C300CS & C300SS only)
- 7 1" Socket Weld
- 8 1½" Socket Weld
- 8 2" Socket Weld
- 5 Other Process Connections as requested

**Other:**

- 00 No sight glass
- 01 S100 Sight glass, 1½" NPT, 3000 psig max
- 02 S100 Sight glass, 2" NPT, 3000 psig max
- 03 Connection for sight glass, 1½" NPT
- 04 Connection for sight glass, 2" NPT
- 05 Customer Specified Requirements

Option (#): Assigned # for Customer Specific requirements



**Example as Selected**

**C300 - 21 - 01**

## C303 Series External Cage for Liquid Level Controls

### Application – External Cage; Working Pressure 2500 psig

- Use in applications where level controls are contained outside of the vessel
- Use on production separators, heaters/treaters, scrubbers, liquid accumulators & process vessels
- Choice of materials for use with most liquids or liquid interfaces
- May be used with most Pathway Liquid Level Control products or other brands with similar application
- Available with a variety of control connections including 1½" NPT, 2" NPT and ring bolted flange
- Process connections of 1" NPT, 1½" NPT, 2" NPT and Socket weld connections of 1", 1½" and 2"



### Features and Benefits of the Pathway C303

- Heavy Duty Rugged Construction
- Choice of materials –
  - Carbon Steel – model C303CS
  - 316 Stainless Steel – model C303SS
- Variety of Control Connections and Process Connections available
- S100 Series Sight Glass may be added for Visual inspection
- Available with Pathway Electric or Pneumatic Liquid Level Controls or separate
- Custom fabrication available

### Specifications

Working Pressure:	2500 psig
Temperature:	-40° F to +450° F
Materials:	Carbon Steel or 316 Stainless Steel
Level Control Connection:	1½" NPT, 2" NPT, or Ring Bolted connection
Process Connections:	1" NPT standard, available 1½" and 2" NPT; socket weld connections of 1", 1½" and 2"

### Benefits of ALL Pathway Control Products

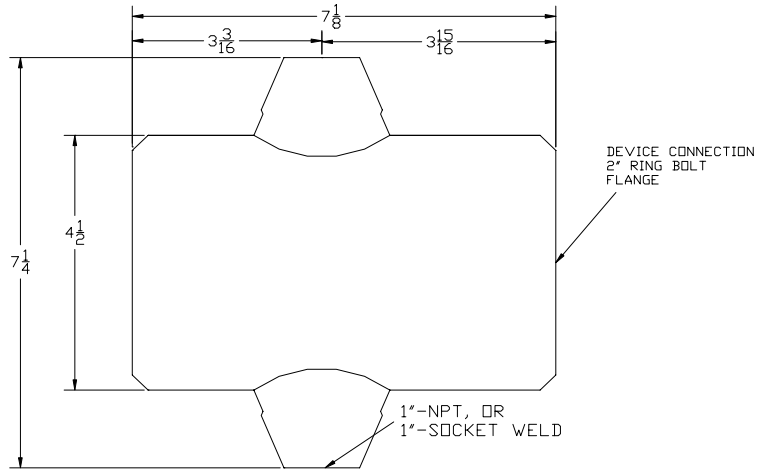
- Personalized service and support expertise; Responsive, On-time Delivery
- Time-tested & proven design providing Dependable, Long-term service



# C303 Series

## External Cage for Liquid Level Controls

**Dimensions:**



**Ordering Chart:**

C303CS: External Cage for Level Controls – Carbon Steel  
 C303SS: – Stainless Steel

**Example:**

**C303CS-**

**Level Control Connection:**

- 1 1 1/2" NPT
- 2 2" NPT
- 3 Ring bolted steel, 2500 psig max

**Process Connections:**

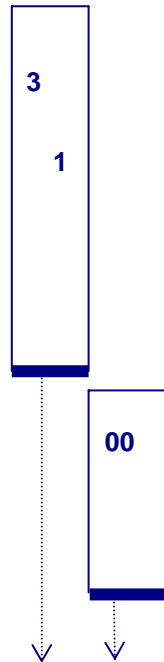
- 1 1" NPT Standard
- 2 1 1/2" NPT
- 3 2" NPT
- 6 1" Socket Weld
- 7 1 1/2" Socket Weld
- 8 2" Socket Weld
- 5 Other Process Connections as requested

**Other:**

- 00 No sight glass
- 01 S100 Sight glass, 1 1/2" NPT, 2500 psig max
- 02 S100 Sight glass, 2" NPT, 2500 psig max
- 03 Connection for Sight Glass, 1 1/2" NPT
- 04 Connection for Sight Glass, 2" NPT
- 05 Customer Specified Requirements (such as flange size)

**Option ( ):**

Assigned # based upon Customer Specific requirements



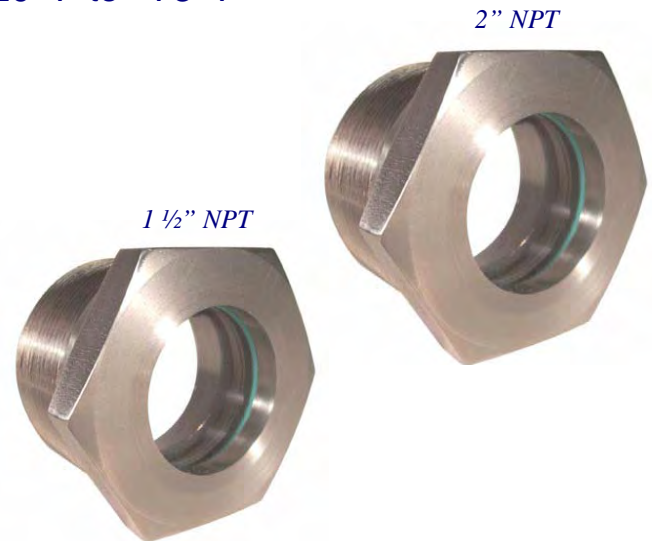
**Example as Selected**

**C303CS - 31 - 00**

## S100 Series Sight Glass

**Application – Sight Glass; WP 3000 psig at -20° F to +73° F**

- Use in applications where visual indication of liquid level is needed
- Provides visual indication on Level Controls or Safety Systems
- May be used with Pathway External Cage Models C300 and C303 and other applications using a 1½” or 2” NPT connection
- Use on production separators, heaters/treaters, scrubbers, liquid accumulators & other process vessels



### Features

- Durable body constructed of 303 SS or 316 SS
- Clear polycarbonate window
- Purchase separately or together with Pathway Pneumatic or Electric Level Controls and External Cages

### Specifications

**Working Pressure:** Pressures up to 3000 psig from -20° F to +73° F, 2000 psig at -40° F, 2650 psig at +100° F, 2020 psig at +150° F, 1000 psig at +230° F max temp

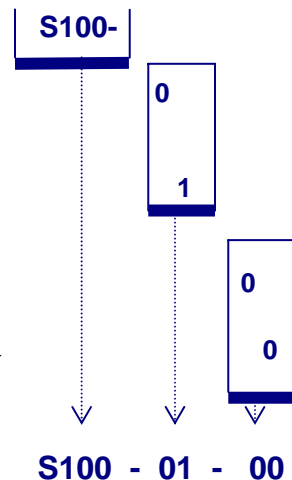
**Materials:** 303 SS standard, 316 SS; polycarbonate lens

**Connections:** 1½” NPT, 2” NPT

### Ordering Chart:

S100: Sight Glass	→	
Body Style:		
0	→	1½” NPT Connection
1	→	2” NPT
Body Type:		
1	→	303 SS standard
2	→	316 SS
Lens Type:		
0	→	Polycarbonate standard
Other:		
0	→	No other options
5	→	Other special materials

### Example:



### Example as Selected