

# MOTOR VALVES

## 8150 SERIES

### **The 8150 Series:**

### **Pressure Control Valve - Back Pressure or Pressure Reducing**

### **Application:**

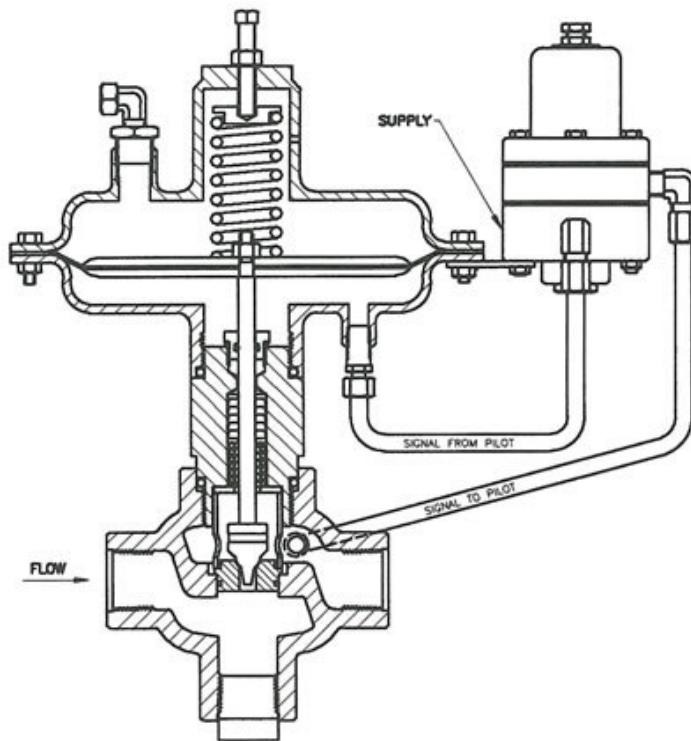
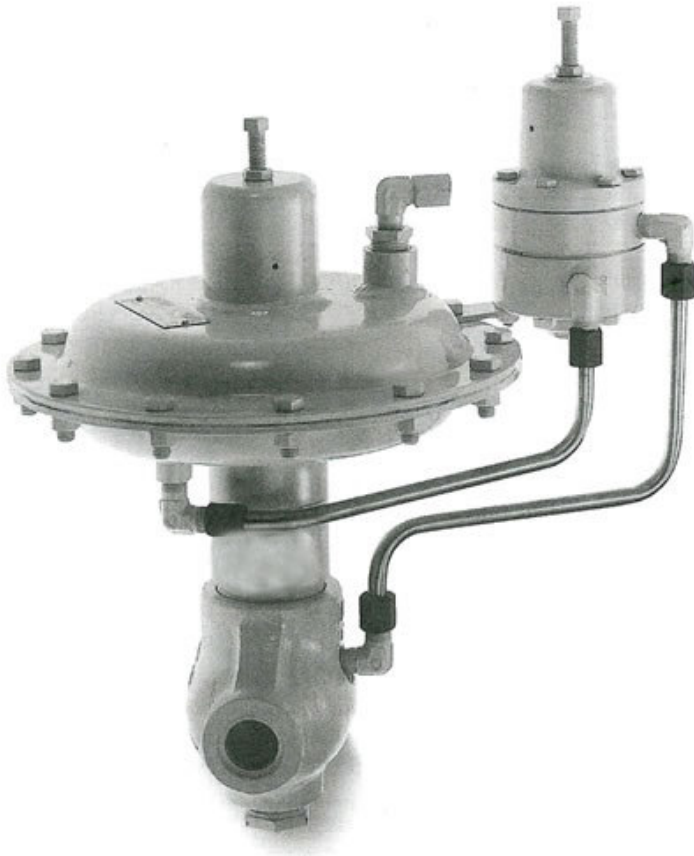
The 8150 Series maintains constant pressure upstream (back pressure) or downstream (pressure reducing) of the valve. The back pressure valve is used to keep a preset pressure on separators, vessels or any line where a constant pressure is critical. The pressure reducing valve limits the pressure downstream of the valve to protect equipment or instruments from higher pressure.

### **Operation:**

The pressure to be controlled is applied to the pressure pilot. The output from the pilot is a 3 to 15 psi pneumatic signal that throttles the valve to maintain the desired pressure. The back pressure version takes the signal from and controls the pressure upstream of the valve. The pressure reducing unit takes the signal from and controls the pressure downstream of the valve.

### **Features:**

- Optional flow patterns with "T" body. Straight through or angle flow for easy installation.
- Easily serviced with the internal parts removable from the top of the valve without removing the body from the line.
- 17-4 PH heat treated stainless steel trim is standard. Available in carbide or soft trim to fit your application.
- Long packing life provided by stainless steel stem working in a replaceable bushing.
- Self lubricating TFE stem packing assures a positive seal without maintenance.
- Easy trim replacement without dismantling topworks.



# MOTOR VALVES

## 8150 SERIES

### Specifications: 8150 Series Pressure Control Valve

<b>Size:</b>	1" Tee Body		2" Tee Body	
<b>Working Pressure:</b>	6000 psi		3000 psi	
<b>Temperature:</b>	-20°F to +180°F standard			
<b>Topworks:</b>	Pressed steel with nylon reinforced nitrile diaphragm; 50 psi maximum supply pressure.			
<b>Effective Area:</b>	Choice of 45 sq. in. or 62 sq. in.			
<b>C<sub>v</sub> Factor - Orifice:</b>	Angle	Globe	Angle	Globe
1/4"	2.3	1.9	2.0	1.8
3/8"	4.6	4.2	4.2	3.7
1/2"	8.3	7.2	7.4	6.9
3/4"	15.0	12.8	16.3	13.9
1"	21.0	16.1	22.8	19.1
<b>Trim:</b>	17-4 PH stainless steel or carbide			
<b>Material:</b>				
Body:	Cast Steel			
Stem:	Stainless steel			
Packing:	TFE			

### Ordering Chart:

**8150 Series: Pressure control valve**

**Size:**

1 - 1"

2 - 2"

**Connection:**

1 - Threaded

3 - Flanged (specify type\*)

4 - Beveled for weld

**Type:**

3 - Back pressure

4 - Pressure reducing

**Trim Type:**

2 - Throttling (stainless steel)

4 - Throttling (carbide)

**Trim Size:**

1 - 1/4"

2 - 3/8"

3 - 1/2"

4 - 3/4"

6 - 1"

**Other:**

1 - No visual indicator

2 - Visual indicator

5 - Options (specify your requirements)

**Option Number:**

( ) - Factory will assign an option number based on specified requirements.

\*flanged models available in 150# to 1,500# RF or RTJ.  
Specify pressure required. Max controlled pressure with 2800 Series Pilot is 350#. Higher pressures available with your choice of pressure Pilots.

**8150** - ( )

**Example: 8150-213-111**