

## C303 Series - External Cage Cage for Liquid Level Controls

### Application – External Cage; Working Pressure 2500 psig

- Use in applications where level controls are contained outside of the vessel itself
- May be used with most Pathway level controls or with others meant for similar application
- Use on production separators, heaters/treaters, scrubbers, liquid accumulators & process vessels in most applications
- Available with a variety of connections as needed for most applications

### Features

- Heavy Duty Rugged Construction
- Available in either Carbon Steel or 316 Stainless Steel
- A fabricated, larger option as compared to the standard Pathway C300 Series External Cage; custom fabrication available



C303CS - 3 model shown

### Specifications

**Working Pressure:** Pressures up to 2500 psi

**Temperature:** -40° F to +450° F

**Materials:** Carbon Steel and 316 Stainless Steel available

**Connections:**

**Process:** 1" NPT standard, available in 1 1/2" and 2" NPT; also in socket weld connections of 1", 1 1/2" and 2"

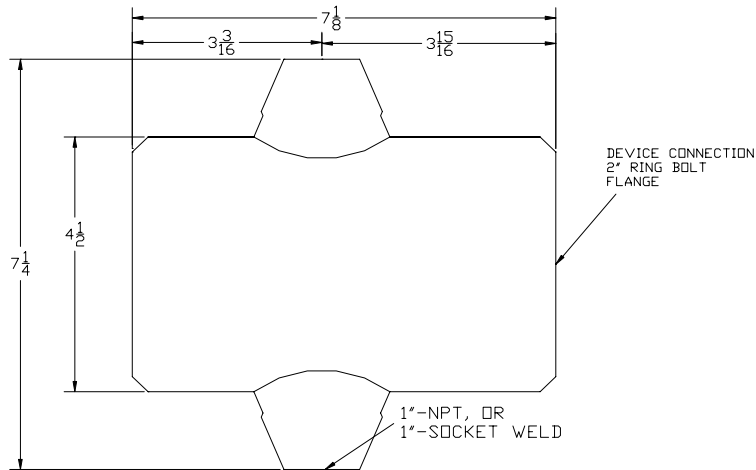
**Level Control:** 1 1/2" NPT, 2" NPT, or ring bolted connection

### Benefits of ALL Pathway Control Products

- Personalized service and support expertise
- Time-tested & proven design providing dependability and reliability in the field
- Custom applications welcomed to meet your needs
- Quality built in
- Responsive, On-time delivery

## C303CS & C303SS Series – External Cage Cage for Liquid Level Controls

**Dimensional Sketch:** Carbon Steel or Stainless Steel bodies; WP up to 2500 psig



**Ordering Chart:**

C303CS: External Cage for Level Controls – Carbon Steel  
 C303SS: External Cage – 316 Stainless Steel construction

**Example:**

**C303CS-**

**Level Control Connections:**

- 1 1 1/2" NPT connection standard
- 2 2" NPT
- 3 Ring bolted steel, max. pressure 2500 psi

**Process Connections:**

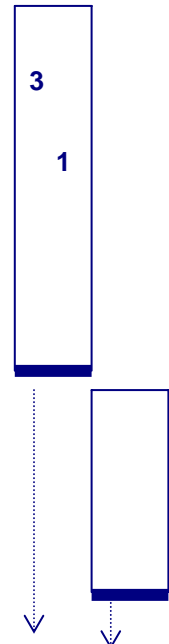
- 1 1" Standard
- 2 1 1/2" NPT
- 3 2" NPT
- 6 1" Socket Weld
- 7 1 1/2" Socket Weld
- 8 2" Socket Weld
- 5 Other Process Connections as requested

**Other:**

- 00 No sight glass
- 01 Sight glass, 1 1/2" NPT connection
- 02 Sight glass, 2" NPT connection
- 05 Customer Specified Requirements (such as flange size)

**Option ( ):**

Assigned based upon Customer Specific requirements



**Example as Selected**

**C303CS - 31**