

PT100 Series Throttling Pneumatic Level Control

Application – High & Low Liquid Level Control; WP 1500 psig to 5000 psig

- Float-actuated Throttling Pneumatic Level Control for High or Low Level control or to operate Control Valves
- Use on production separators, heaters/treaters, scrubbers, liquid accumulators & process vessels
- Stainless Steel construction for use with most Liquids or Liquid Interfaces
- Low Specific Gravity of .4 and above
- Throttling output 3 – 15 psig with 20 psig supply
- Direct mounting inside vessel or External Float Cage



Features and Benefits of the Pathway PT100

- Durable, Dependable 316 SS wetted components for Corrosion Resistance
- No Internal Seal used thus eliminating the possibility of process fluid leakage
- Few Moving Parts for Reduced Maintenance and long term Performance
- Economical small-float installation
- Displacer options for various Pressure, Specific Gravity and Interface applications
- Replaceable Throttling Action Pilot
- Direct-acting or Indirect-acting simply by inverting the level control unit
- Manual Override option for Field Testing

Specifications

Output:	Throttling from 3 to 15 psig
Working Pressure:	1500 psig; available up to 5000 psig; 1500 psig with manual override
Supply Pressure:	20 psig minimum; 30 psig maximum
Temperature:	-40° F to +450° F
Specific Gravity:	0.4 minimum; interface 0.1 differential
Materials:	316 Stainless Steel wetted components; optional materials available
Process Connection:	2" NPT standard, Ring Bolt on PT100C, 3" flanged or larger
Supply/Output Connection:	1/8" NPT

PT100 Common Options

- Manual Override for Field Testing
- 316 SS & 304 SS flange connection
- Monel float
- Stainless Steel Vent assembly
- Annulus Plug for use with sediments

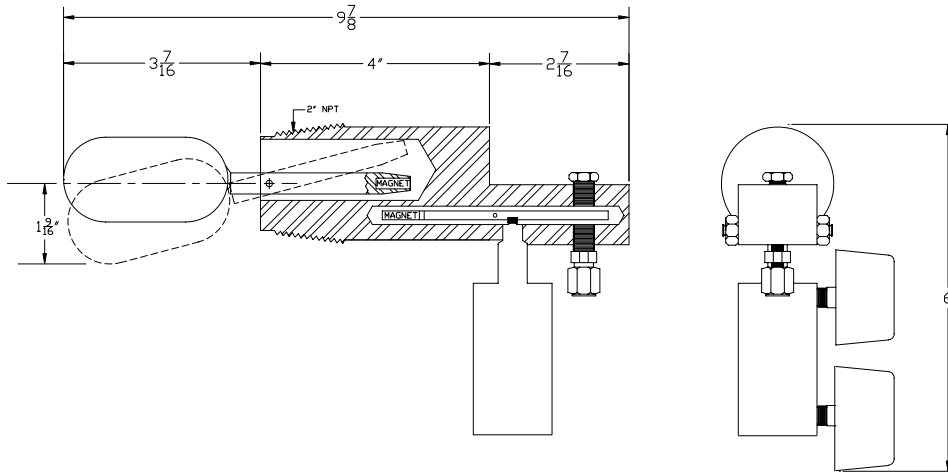
Benefits of ALL Pathway Control Products

- Personalized service and support expertise; Responsive, On-time Delivery
- Time-tested & Proven design providing Dependable, Long-term service

PT100 Series

Throttling Pneumatic Level Control

Dimensions:



Ordering Chart:

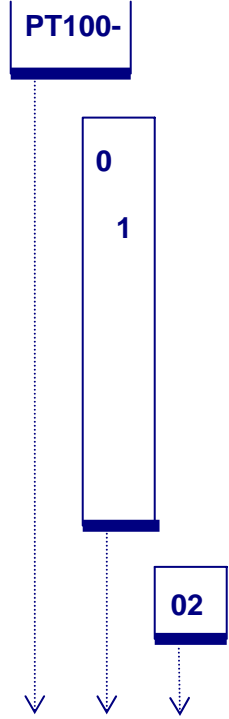
Example:

PT 100 Series: Throttling Pneumatic Level Control → **PT100-**
 PT100C: Ring Bolted External cage; WP 1500 psig to 3000 psig (body style 0)

- Body Style:**
 0 2" NPT standard body; Ring bolted body on PT100C →
- Type:**
 1 316 SS standard float, WP 1500 psig, 0.4 SG min →
 2 Polypropylene high pressure displacer, WP 5000 psig standard, 3000 psig on PT100C; +180° F max temp; 0.6 SG min
 3 Interface Polypropylene displacer, WP 5000 psig standard, 3000 psig on PT100C; +180° F max temp; upper fluid < .870 SG, lower fluid > .970 SG
 4 Customer defined SG for upper and lower fluid Interface

- Other:**
 00 No other options →
 02 Annulus plug
 05 Customer Specific Requirements (see PT100 Common Options)

Option (#): Assigned # for Customer Specific Requirements



Example as Selected

PT100 - 01 - 02